

Contents

1	Input/Output	3
1.1	The Physical Layout of ROOT Files	3
1.2	The Logical ROOT File: TFile and TKey	7
1.3	Streamers	17
1.4	Pointers and References in Persistency	22
1.5	Schema Evolution	26
1.6	Compression and Performance	33
1.7	Remotely Access to ROOT Files	34
1.8	XML Interface	35

Chapter 1

Input/Output

This chapter covers the saving and reading of objects to and from ROOT files. It begins with an explanation of the physical layout of a ROOT file. It includes a discussion on compression, and file recovery. Then we explain the logical file, the class `TFile` and its methods. We show how to navigate in a file, how to save objects and read them back. We also include a discussion on `Streamers`. `Streamers` are the methods responsible to capture an objects current state to save it to disk or send it over the network. At the end of the chapter is a discussion on the two specialized ROOT files: `TNetFile` and `TWebFile`.

1.1 The Physical Layout of ROOT Files

A ROOT file is like a UNIX file directory. It can contain directories and objects organized in unlimited number of levels. It also is stored in machine independent format (ASCII, IEEE floating point, Big Endian byte ordering). To look at the physical layout of a ROOT file, we first create one. This example creates a ROOT file and 15 histograms, fills each histogram with 1000 entries from a Gaussian distribution, and writes them to the file.

```
{
    char name[10], title[20];
    TObjectArray Hlist(0);           // create an array of Histograms
    TH1F* h;                         // create a pointer to a histogram
    // make and fill 15 histograms and add them to the object array
    for (Int_t i = 0; i < 15; i++) {
        sprintf(name,"h%d",i);
        sprintf(title,"histo nr:%d",i);
        h = new TH1F(name,title,100,-4,4);
        Hlist.Add(h);
        h->FillRandom("gaus",1000);
    }
    // open a file and write the array to the file
    TFile f("demo.root","recreate");
    Hlist.Write();
    f.Close();
}
```

The example begins with a call to the `TFile` constructor. This class is describing the ROOT file (that has the extension “.root”). In the next section, we will cover `TFile` in details. The last line of the example closes the file. To view its contents we need to open it again, and to create a `TBrowser` object by:

```
root[] TFile f("demo.root")
root[] TBrowser browser;
```

You can check if the file is correctly opened by:

```
TFile f("demo.root");
if (f.IsZombie()) {
    cout << "Error opening file" << endl;
    exit(-1);
} else {
    ...
}
```

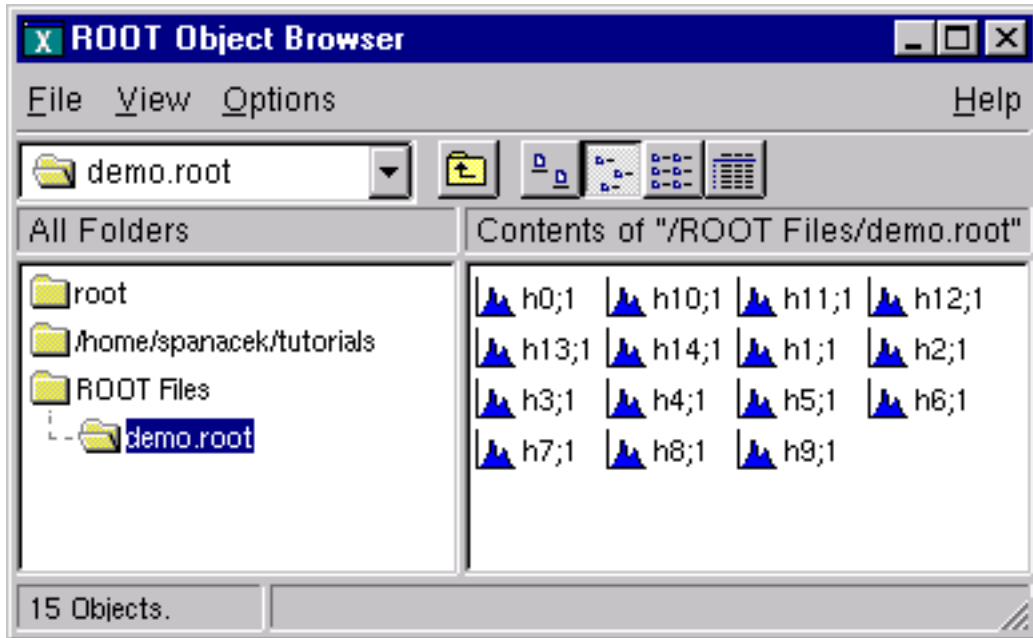


Figure 1.1: The browser with 15 created histograms

Once we have the `TFile` object, we can call the `TFile::Map()` method to view the physical layout. The output prints the date/time, the start record address, the number of bytes in the record, the class name of the record and the compression factor.

```
root[] f.Map()
20051208/124502 At:100 N=114 TFile
20051208/124502 At:214 N=413 TH1F CX = 2.35
20051208/124502 At:627 N=410 TH1F CX = 2.36
20051208/124502 At:1037 N=396 TH1F CX = 2.45
20051208/124502 At:1433 N=400 TH1F CX = 2.42
20051208/124502 At:1833 N=402 TH1F CX = 2.41
20051208/124502 At:2235 N=416 TH1F CX = 2.33
20051208/124502 At:2651 N=406 TH1F CX = 2.39
20051208/124502 At:3057 N=403 TH1F CX = 2.40
20051208/124502 At:3460 N=411 TH1F CX = 2.36
20051208/124502 At:3871 N=400 TH1F CX = 2.42
20051208/124502 At:4271 N=409 TH1F CX = 2.38
20051208/124502 At:4680 N=409 TH1F CX = 2.38
20051208/124502 At:5089 N=420 TH1F CX = 2.32
20051208/124502 At:5509 N=406 TH1F CX = 2.40
20051208/124502 At:5915 N=405 TH1F CX = 2.40
20051208/124503 At:6320 N=3052 StreamerInfo CX = 3.16
20051208/124503 At:9372 N=732 KeysList
20051208/124503 At:10104 N=53 FreeSegments
20051208/124503 At:10157 N=1 END
```

Here we see the fifteen histograms (`TH1F`'s) with the first one starting at byte 148. We also see an entry `TFile`. You may notice that the first entry starts at byte 100. The first 100 bytes are taken by the file header.

1.1.1 The File Header

This table shows the file header information. When `fVersion` is greater than 1000000, the file is a large file (> 2 GB) and the offsets will be 8 bytes long. The location in brackets are the location in the case of a large file.

Byte	Value Name	Description
1 -> 4	"root"	Root file identifier
5 -> 8	<code>fVersion</code>	File format version
9 -> 12	<code>fBEGIN</code>	Pointer to first data record
13 -> 16 [13->20]	<code>fEND</code>	Pointer to first free word at the EOF
17 -> 20 [21->28]	<code>fSeekFree</code>	Pointer to FREE data record

21 -> 24 [29->32]	fNbytesFree	Number of bytes in FREE data record
25 -> 28 [33->36]	nfree	Number of free data records
29 -> 32 [37->40]	fNbytesName	Number of bytes in TNamed at creation time
33 -> 33 [41->41]	fUnits	Number of bytes for file pointers
34 -> 37 [42->45]	fCompress	Zip compression level
38 -> 41 [46->53]	fSeekInfo	Pointer to TStreamerInfo record
42 -> 45 [54->57]	fNBytesInfo	Number of bytes in TStreamerInfo record
46 -> 63 [58->75]	fCompress	Universal Unique ID

The first four bytes of the file header contain the string “root” which identifies a file as a ROOT file. Because of this identifier, ROOT is not dependent on the “.root” extension. It is still a good idea to use the extension, just for us to recognize them easier. The `nfree` and value is the number of free records. This variable along with `FNbytesFree` keeps track of the free space in terms of records and bytes. This count also includes the deleted records, which are available again.

1.1.2 The Top Directory Description

The 84 bytes after the file header contain the top directory description, including the name, the date and time it was created, and the date and time of the last modification.

```
20010404/092347 At:64      N=84      TFile
```

1.1.3 The Histogram Records

What follows are the 15 histograms, in records of variable length.

```
20010404/092347 At:148      N=380      TH1F      CX = 2.49
20010404/092347 At:528      N=377      TH1F      CX = 2.51
```

The first 4 bytes of each record is an integer holding the number of bytes in this record. A negative number flags the record as deleted, and makes the space available for recycling in the next writing. The rest of bytes in the header contain all the information to identify uniquely a data block on the file. It is followed by the object data.

The next table explains the values in each individual record. If the key is located past the 32 bit file limit (> 2 GB) then some fields will be 8 bytes instead of 4 bytes (values between the brackets):

Byte	Value Name	Description
1 -> 4	Nbytes	Length of compressed object (in bytes)
5 -> 6	Version	TKey version identifier
7 -> 10	ObjLen	Length of uncompressed object
11 -> 14	Datetime	Date and time when object was written to file
15 -> 16	KeyLen	Length of the key structure (in bytes)
17 -> 18	Cycle	Cycle of key
19 -> 22 [19->26]	SeekKey	Pointer to record itself (consistency check)
23 -> 26 [27->34]	SeekPdir	Pointer to directory header
27 -> 27 [35->35]	lname	Number of bytes in the class name
28 -> ... [36->..	.) ClassName	Object Class Name
... -> ...	lname	Number of bytes in the object name
... -> ...	Name	lName bytes with the name of the object
... -> ...	lTitle	Number of bytes in the object title
... -> ...	Title	Title of the object
... -> ...	DATA	Data bytes associated to the object

You see a reference to **TKey**. It is explained in detail in the next section.

1.1.4 The Class Description List (StreamerInfo List)

The histogram records are followed by the **StreamerInfo** list of class descriptions. The list contains the description of each class that has been written to file.

```
20010404/092347 At:5854 N=2390 StreamerInfo CX = 3.41
```

The class description is recursive, because to fully describe a class, its ancestors and object data members have to be described also. In `demo.root`, the class description list contains the description for:

- **TH1F**
- all classes in the **TH1F** inheritance tree
- all classes of the object data members
- all classes in the object data members' inheritance tree.

This description is implemented by the **TStreamerInfo** class, and is often referred to as simply **StreamerInfo**. You can print a file's **StreamerInfo** list with the `TFile::ShowStreamerInfo` method. Below is an example of the output. Only the first line of each class description is shown. The `demo.root` example contains only **TH1F** objects. Here we see the recursive nature of the class description; it contains the **StreamerInfo** of all the classes needed to describe **TH1F**.

```
root[] f.ShowStreamerInfo()
StreamerInfo for class: TH1F, version=1
  BASE      TH1          offset=0 type= 0 1-Dim histogram base class
  BASE      TArrayF      offset=0 type= 0 Array of floats

StreamerInfo for class: TH1, version=3
  BASE      TNamed       offset=0 type=67 The basis for named object(name,title)
  BASE      TAttLine     offset=0 type= 0 Line attributes
  BASE      TAttFill     offset=0 type= 0 Fill area attributes
  BASE      TAttMarker   offset=0 type= 0 Marker attributes
  Int_t     fNcells      offset=0 type= 3 number bins(1D),cells(2D)+U/Overflows
  TAxis     fXaxis       offset=0 type=61 X axis descriptor
  TAxis     fYaxis       offset=0 type=61 Y axis descriptor
  TAxis     fZaxis       offset=0 type=61 Z axis descriptor
  Short_t   fBarOffset   offset=0 type= 2 (1000*offset) for barcharts or legos
  Short_t   fBarWidth    offset=0 type= 2 (1000*width) for bar charts or legos
  Stat_t    fEntries     offset=0 type= 8 Number of entries//continued...
  Stat_t    fTsumw       offset=0 type= 8 Total Sum of weights
  Stat_t    fTsumw2      offset=0 type= 8 Total Sum of squares of weights
  Stat_t    fTsumwx      offset=0 type= 8 Total Sum of weight*X
  Stat_t    fTsumwx2     offset=0 type= 8 Total Sum of weight*X*X
  Double_t  fMaximum     offset=0 type= 8 Maximum value for plotting
  Double_t  fMinimum     offset=0 type= 8 Minimum value for plotting
  Double_t  fNormFactor  offset=0 type= 8 Normalization factor
  TArrayD   fContour     offset=0 type=62 Array to display contour levels
  TArrayD   fSumw2       offset=0 type=62 Array of sum of squares of weights
  TString   fOption      offset=0 type=65 histogram options
  TList*    fFunctions   offset=0 type=63 ->Pointer to list of functions(fits,user)

StreamerInfo for class: TNamed, version=1
...
StreamerInfo for class: TAttLine, version=1
...
StreamerInfo for class: TAttFill, version=1
...
StreamerInfo for class: TAttMarker, version=1
...
StreamerInfo for class: TArrayF, version=1
...
StreamerInfo for class: TArray, version=1
...
StreamerInfo for class: TAxis, version=6
...
StreamerInfo for class: TAttAxis, version=4
...
```

ROOT allows a class to have multiple versions, and each version has its own description in form of a **StreamerInfo**. Above you see the class name and version number. The **StreamerInfo** list has only one description for each class/version

combination it encountered. The file can have multiple versions of the same class, for example objects of old and new versions of a class can be in the same file. The `StreamerInfo`s described in detail in the section on Streamers.

1.1.5 The List of Keys and the List of Free Blocks

The last three entries on the output of `TFile::Map()` are the list of keys, the list of free segments, and the address where the data ends.. When a file is closed, it writes a linked list of keys at the end of the file. This is what we see in the third to the last entry. In our example, the list of keys is stored in 732 bytes beginning at byte# 8244.

```
20010404/092347    At:8244      N=732      KeysList
20010404/092347    At:8976      N=53      FreeSegments
20010404/092347    At:9029      N=1       END
```

The second to last entry is a list of free segments. In our case, this starts 8976 and is not very long, only 53 bytes, since we have not deleted any objects. The last entry is the address of the last byte in the file.

1.1.6 File Recovery

A file may become corrupted or it may be impossible to write it to disk and close it properly. For example if the file is too large and exceeds the disk quota, or the job crashes or a batch job reaches its time limit before the file can be closed. In these cases, it is imperative to recover and retain as much information as possible. ROOT provides an intelligent and elegant file recovery mechanism using the redundant directory information in the record header.

If a file that has been not properly closed is opened again, it is scanned and rebuilt according to the information in the record header. The recovery algorithm reads the file and creates the saved objects in memory according to the header information. It then rebuilds the directory and file structure. If the file is opened in write mode, the recovery makes the correction on disk when the file is closed; however if the file is opened in read mode, the correction can not be written to disk. You can also explicitly invoke the recovery procedure by calling the `TFile::Recover()` method. You can recover the directory structure, but you cannot save what you recovered to the file on disk. In the following example, we interrupted and aborted the previous ROOT session, causing the file not to be closed. When we start a new session and attempt to open the file, it gives us an explanation and status on the recovery attempt.

```
root[] TFile f("demo.root")
Warning in <TFile::TFile>: file demo.root probably not closed, trying to recover successfully recovered 15
```

1.2 The Logical ROOT File: TFile and TKey

We saw that the `TFile::Map()` method reads the file sequentially and prints information about each record while scanning the file. It is not feasible to support only sequential access and hence ROOT provides random or direct access, i.e. reading a specified object at a time. To do so, `TFile` keeps a list of **TKeys**, which is essentially an index to the objects in the file. The `TKey` class describes the record headers of objects in the file. For example, we can get the list of keys and print them. To find a specific object on the file we can use the `TFile::Get()` method.

```
root[] TFile f("demo.root")
root[] f.GetListOfKeys()->Print()
TKey Name = h0, Title = histo nr:0, Cycle = 1
TKey Name = h1, Title = histo nr:1, Cycle = 1
TKey Name = h2, Title = histo nr:2, Cycle = 1
TKey Name = h3, Title = histo nr:3, Cycle = 1
TKey Name = h4, Title = histo nr:4, Cycle = 1
TKey Name = h5, Title = histo nr:5, Cycle = 1
TKey Name = h6, Title = histo nr:6, Cycle = 1
TKey Name = h7, Title = histo nr:7, Cycle = 1
TKey Name = h8, Title = histo nr:8, Cycle = 1
TKey Name = h9, Title = histo nr:9, Cycle = 1
TKey Name = h10, Title = histo nr:10, Cycle = 1
TKey Name = h11, Title = histo nr:11, Cycle = 1
TKey Name = h12, Title = histo nr:12, Cycle = 1
TKey Name = h13, Title = histo nr:13, Cycle = 1
TKey Name = h14, Title = histo nr:14, Cycle = 1
root[] TH1F *h9 = (TH1F*)f.Get("h9");
```

The `TFile::Get()` finds the `TKey` object with name “h9”. Using the `TKey` info it will import in memory the object in the file at the file address #3352 (see the output from the `TFile::Map` above). This is done by the `Streamer` method that is covered in detail in a later section. Since the keys are available in a `TList` of `TKeys` we can iterate over the list of keys:

```
{
  TFile f("demo.root");
  TIter next(f.GetListOfKeys());
  TKey *key;
  while ((key=(TKey*)next())) {
    printf("key: %s points to an object of class: %s at %dn",
          key->GetName(),
          key->GetClassName(),key->GetSeekKey());
  }
}
```

The output of this script is:

```
root[] .x iterate.C
key: h0 points to an object of class: TH1F at 150
key: h1 points to an object of class: TH1F at 503
key: h2 points to an object of class: TH1F at 854
key: h3 points to an object of class: TH1F at 1194
key: h4 points to an object of class: TH1F at 1539
key: h5 points to an object of class: TH1F at 1882
key: h6 points to an object of class: TH1F at 2240
key: h7 points to an object of class: TH1F at 2582
key: h8 points to an object of class: TH1F at 2937
key: h9 points to an object of class: TH1F at 3293
key: h10 points to an object of class: TH1F at 3639
key: h11 points to an object of class: TH1F at 3986
key: h12 points to an object of class: TH1F at 4339
key: h13 points to an object of class: TH1F at 4694
key: h14 points to an object of class: TH1F at 5038
```

In addition to the list of keys, `TFile` also keeps two other lists: `TFile::fFree` is a `TList` of free blocks used to recycle freed up space in the file. `ROOT` tries to find the best free block. If a free block matches the size of the new object to be stored, the object is written in the free block and this free block is deleted from the list. If not, the first free block bigger than the object is used. `TFile::fListHead` contains a sorted list (`TSortedList`) of objects in memory. The diagram below illustrates the logical view of the `TFile` and `TKey`.

1.2.1 Viewing the Logical File Contents

`TFile` is a descendent of `TDirectory`, which means it behaves like a `TDirectory`. We can list the contents, print the name, and create subdirectories. In a `ROOT` session, you are always in a directory and the directory you are in is called the current directory and is stored in the global variable `gDirectory`. Let us look at a more detailed example of a `ROOT` file and its role as the current directory. First, we create a `ROOT` file by executing a sample script.

```
root[] .x $ROOTSYS/tutorials/hsimple.C
```

Now you should have `hsimple.root` in your directory. The file was closed by the script so we have to open it again to work with it. We open the file with the intent to update it, and list its contents.

```
root[] TFile f ("hsimple.root","UPDATE")
root[] f.ls()
TFile** hsimple.root
TFile* hsimple.root
KEY: TH1F hpx;1 This is the px distribution
KEY: TH2F hpxpy;1 py vs px
KEY: TProfile hprof;1 Profile of pz versus px
KEY: TNtuple ntuple;1 Demo ntuple
```

It shows the two lines starting with `TFile` followed by four lines starting with the word “KEY”. The four keys tell us that there are four objects on disk in this file. The syntax of the listing is:

```
KEY: <class> <variable>;<cycle number> <title>
```

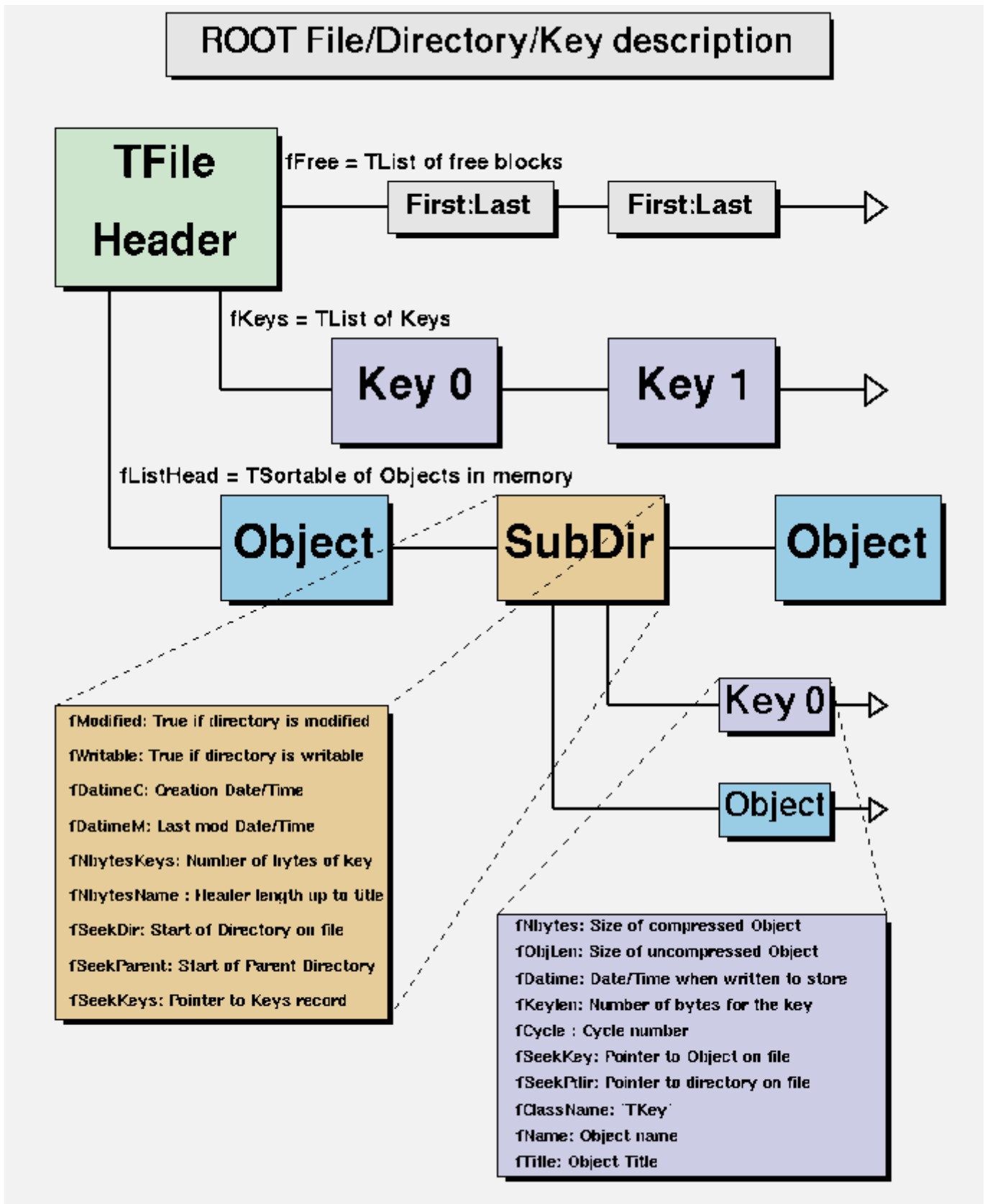



Figure 1.2: ROOT File/Directory/Key description

For example, the first line in the list means there is an object in the file on disk, called `hpx`. It is of the class `TH1F` (one-dimensional histogram of floating numbers). The object's title is "This is the `px` distribution". If the line starts with `OBJ`, the object is in memory. The `<class>` is the name of the ROOT class (T-something). The `<variable>` is the name of the object. The cycle number along with the variable name uniquely identifies the object. The `<title>` is the string given in the constructor of the object as title.

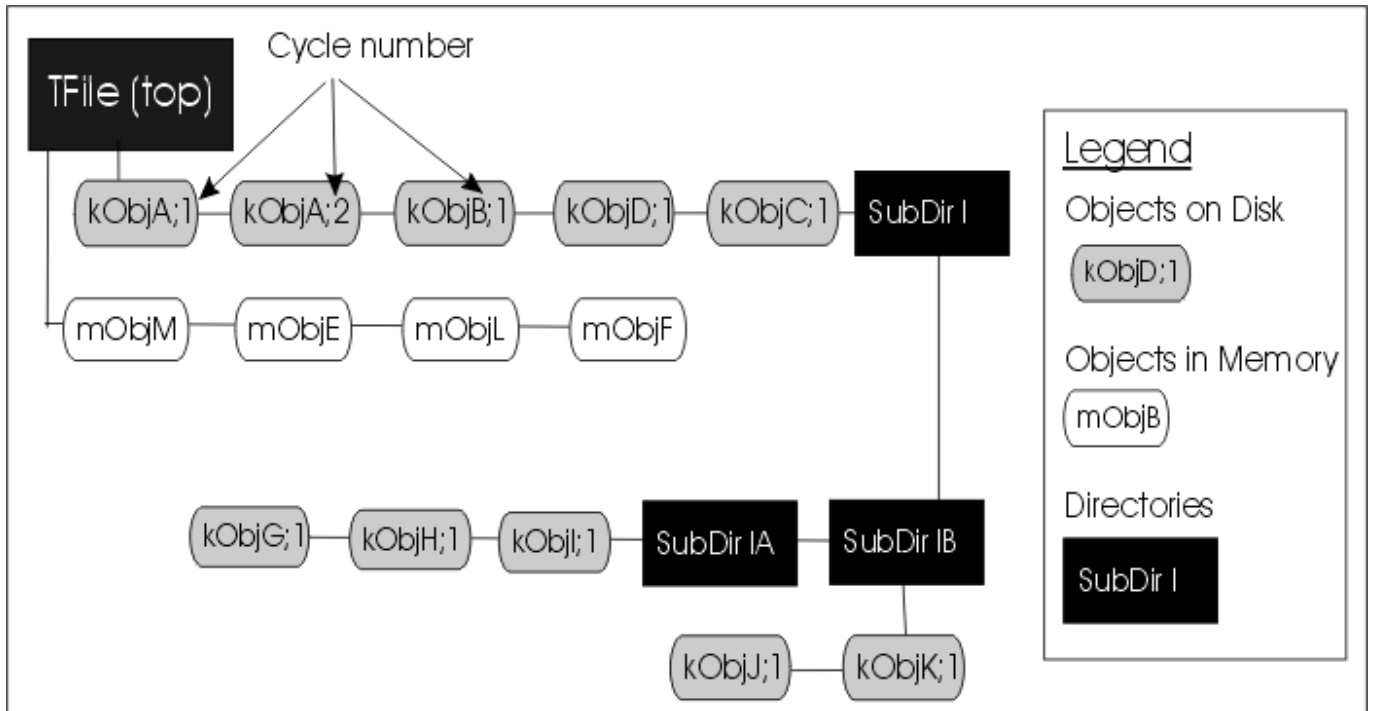


Figure 1.3: The structure of TFile

The figure shows a `TFile` with five objects in the top directory (`kObjA;1`, `kObjA;2`, `kObjB;1`, `kObjC;1` and `kObjD;1`). `ObjA` is on file twice with two different cycle numbers. It also shows four objects in memory (`mObjE`, `mObjF`, `mObjM`, `mObjL`). It also shows several subdirectories.

1.2.2 The Current Directory

When you create a `TFile` object, it becomes the current directory. Therefore, the last file to be opened is always the current directory. To check your current directory you can type:

```
root[] gDirectory->pwd()
Rint: /
```

This means that the current directory is the ROOT session (`Rint`). When you create a file, and repeat the command the file becomes the current directory.

```
root[] TFile f1("AFile1.root");
root[] gDirectory->pwd()
AFile1.root: /
```

If you create two files, the last becomes the current directory.

```
root[] TFile f2("AFile2.root");
root[] gDirectory->pwd()
AFile2.root: /
```

To switch back to the first file, or to switch to any file in general, you can use the `TDirectory::cd` method. The next command changes the current directory back to the first file.

```
root[] f1.cd();
root[] gDirectory->pwd()
AFile1.root: /
```

Note that even if you open the file in "READ" mode, it still becomes the current directory. Cling also offers a shortcut for `gDirectory->pwd()` and `gDirectory->ls()`, you can type:

```

root[] .pwd
AFile1.root:/
root[] .ls
TFile**      AFile1.root
TFile*       AFile1.root

```

To return to the home directory where we were before:

```

root[] gROOT->cd()
(unsigned char)1
root[] gROOT->pwd()
Rint:/

```

1.2.3 Objects in Memory and Objects on Disk

The `TFile::ls()` method has an option to list the objects on disk (“-d”) or the objects in memory (“-m”). If no option is given it lists both, first the objects in memory, then the objects on disk. For example:

```

root[] TFile *f = new TFile("hsimple.root");
root[] gDirectory->ls("-m")
TFile**      hsimple.root
TFile*       hsimple.root

```

Remember that `gDirectory` is the current directory and at this time is equivalent to “f”. This correctly states that no objects are in memory.

The next command lists the objects on disk in the current directory.

```

root[] gDirectory->ls("-d")
TFile**      hsimple.root
TFile*       hsimple.root
KEY: TH1F    hpx;1   This is the px distribution
KEY: TH2F    hpxpy;1 py vs px
KEY: TProfile hprof;1 Profile of pz versus px
KEY: TNtuple ntuple;1 Demo ntuple

```

To bring an object from disk into memory, we have to use it or “Get” it explicitly. When we use the object, ROOT gets it for us. Any reference to `hprof` will read it from the file. For example drawing `hprof` will read it from the file and create an object in memory. Here we draw the profile histogram, and then we list the contents.

```

root[] hprof->Draw()
<TCanvas::MakeDefCanvas>: created default TCanvas with name c1
root[] f->ls()
TFile** hsimple.root
TFile* hsimple.root
OBJ: TProfile hprof Profile of pz versus px : 0
KEY: TH1F hpx;1 This is the px distribution
KEY: TH2F hpxpy;1 py vs px
KEY: TProfile hprof;1 Profile of pz versus px
KEY: TNtuple ntuple;1 Demo ntuple

```

We now see a new line that starts with OBJ. This means that an object of class `TProfile`, called `hprof` has been added in memory to this directory. This new `hprof` in memory is independent from the `hprof` on disk. If we make changes to the `hprof` in memory, they are not propagated to the `hprof` on disk. A new version of `hprof` will be saved once we call `Write`.

You may wonder why `hprof` is added to the objects in the current directory. `hprof` is of the class `TProfile` that inherits from `TH1D`, which inherits from `TH1`. `TH1` is the basic histogram. All histograms and trees are created in the current directory (also see “Histograms and the Current Directory”). The reference to “all histograms” includes objects of any class descending directly or indirectly from `TH1`. Hence, our `TProfile` `hprof` is created in the current directory `f`. There was another side effect when we called the `TH1::Draw` method. ROOT printed this statement:

```
<TCanvas::MakeDefCanvas>: created default TCanvas with name c1
```

It tells us that a `TCanvas` was created and it named it `c1`. This is where ROOT is being nice, and it creates a canvas for drawing the histogram if no canvas was named in the draw command, and if no active canvas exists. The newly created canvas, however, is NOT listed in the contents of the current directory. Why is that? The canvas is not added to the current directory, because by default ONLY histograms and trees are added to the object list of the current

directory. Actually, **TEventList** objects are also added to the current directory, but at this time, we don't have to worry about those. If the canvas is not in the current directory then where is it? Because it is a canvas, it was added to the list of canvases.

This list can be obtained by the command `gROOT->GetListOfCanvases()->ls()`. The `ls()` will print the contents of the list. In our list, we have one canvas called `c1`. It has a **TFrame**, a **TProfile**, and a **TPaveStats**.

```
root[] gROOT->GetListOfCanvases()->ls()
Canvas Name=c1 Title=c1
Option=TCanvas fXlowNDC=0 fYlowNDC=0 fWNDC=1 fHNDC=1
Name= c1 Title= c1
Option=TFrame X1= -4.000000 Y1=0.000000 X2=4.000000 Y2=19.384882
OBJ: TProfile hprof Profile of pz versus px : 0
TPaveText X1=-4.900000 Y1=20.475282 X2=-0.950000 Y2=21.686837 title
TPaveStats X1=2.800000 Y1=17.446395 X2=4.800000 Y2=21.323371 stats
```

Lets proceed with our example and draw one more histogram, and we see one more OBJ entry.

```
root[] hpx->Draw()
root[] f->ls()
TFile**          hsimple.root
TFile*           hsimple.root
OBJ: TProfile hprof Profile of pz versus px : 0
OBJ: TH1F hpx This is the px distribution : 0
KEY: TH1F hpx;1 This is the px distribution
KEY: TH2F hpxpy;1 py vs px
KEY: TProfile hprof;1 Profile of pz versus px
KEY: TNtuple ntuple;1 Demo ntuple
```

`TFile::ls()` loops over the list of objects in memory and the list of objects on disk. In both cases, it calls the `ls()` method of each object. The implementation of the `ls` method is specific to the class of the object, all of these objects are descendants of **TObject** and inherit the **TObject::ls()** implementation. The histogram classes are descendants of **TNamed** that in turn is a descent of **TObject**. In this case, **TNamed::ls()** is executed, and it prints the name of the class, and the name and title of the object. Each directory keeps a list of its objects in the memory. You can get this list by **TDirectory::GetList()**. To see the lists in memory contents you can do:

```
root[] f->GetList()->ls()
OBJ: TProfile hprof Profile of pz versus px : 0
OBJ: TH1F hpx This is the px distribution : 0
```

Since the file `f` is the current directory (**gDirectory**), this will yield the same result:

```
root[] gDirectory->GetList()->ls()
OBJ: TProfile hprof Profile of pz versus px : 0
OBJ: TH1F hpx This is the px distribution : 0
```

1.2.4 Saving Histograms to Disk

At this time, the objects in memory (OBJ) are identical to the objects on disk (KEY). Let's change that by adding a fill to the `hpx` we have in memory.

```
root[] hpx->Fill(0)
```

Now the `hpx` in memory is different from the histogram (`hpx`) on disk. Only one version of the object can be in memory, however, on disk we can store multiple versions of the object. The `TFile::Write` method will write the list of objects in the current directory to disk. It will add a new version of `hpx` and `hprof`.

```
root[] f->Write()
root[] f->ls()
TFile**          hsimple.root
TFile*           hsimple.root
OBJ: TProfile hprof Profile of pz versus px : 0
OBJ: TH1F hpx This is the px distribution : 0
KEY: TH1F hpx;2 This is the px distribution
KEY: TH1F hpx;1 This is the px distribution
KEY: TH2F hpxpy;1 py vs px
KEY: TProfile hprof;2 Profile of pz versus px
```

KEY: TProfile hpx;1 Profile of pz versus px
 KEY: TTuple ntuple;1 Demo ntuple

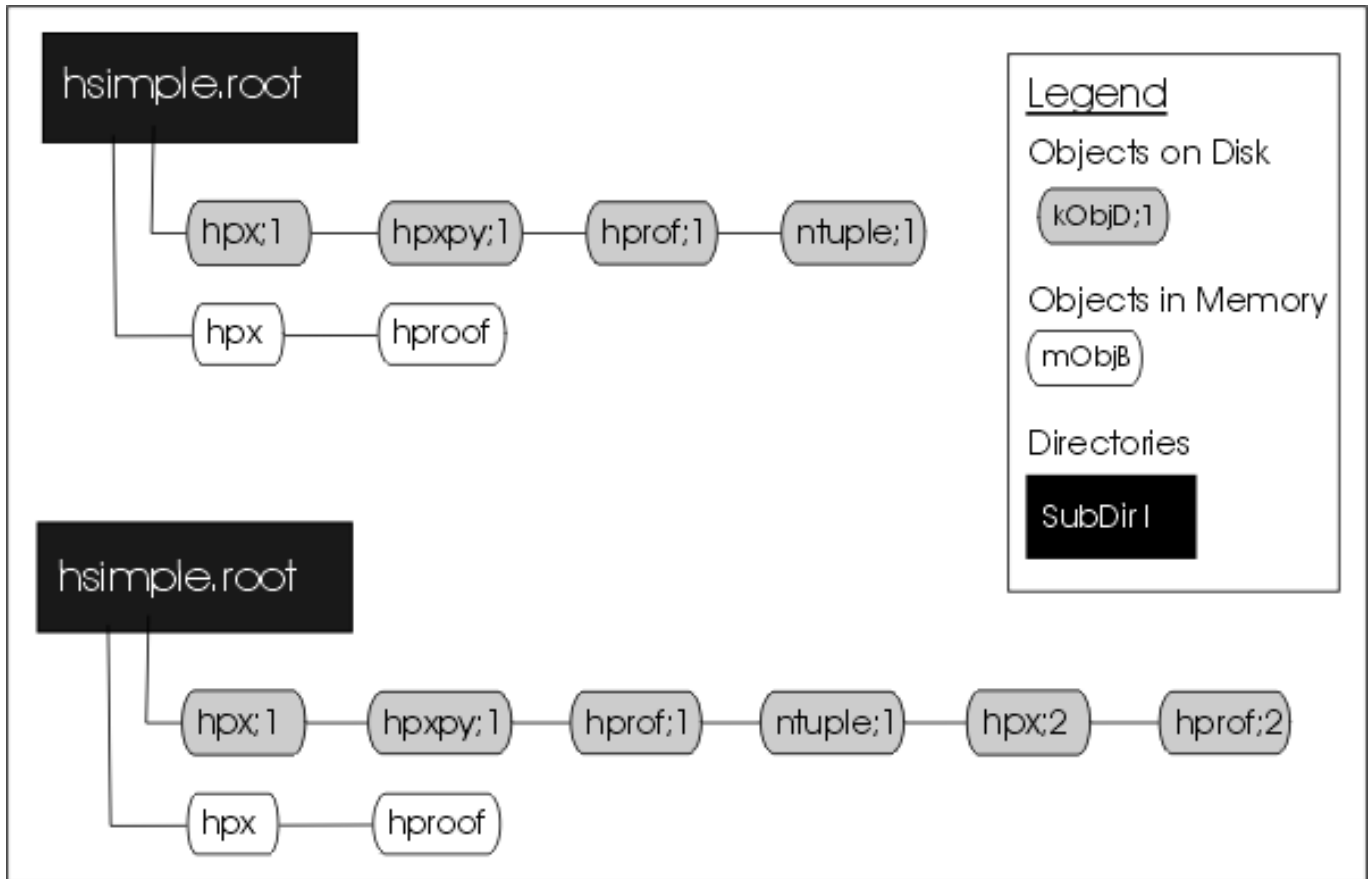


Figure 1.4: The file before and after the call to Write

The `TFile::Write` method wrote the entire list of objects in the current directory to the file. You see that it added two new keys: `hpx;2` and `hprof;2` to the file. Unlike memory, a file is capable of storing multiple objects with the same name. Their cycle number, the number after the semicolon, differentiates objects on disk with the same name. If you wanted to save only `hpx` to the file, but not the entire list of objects, you could use the `TH1::Write` method of `hpx`:

```
root[] hpx->Write()
```

A call to `obj->Write` without any parameters will call `obj->GetName()` to find the name of the object and use it to create a key with the same name. You can specify a new name by giving it as a parameter to the `Write` method.

```
root[] hpx->Write("newName")
```

If you want to re-write the same object, with the same key, use the `overwrite` option.

```
root[] hpx->Write("", TObject::kOverwrite)
```

If you give a new name and use the `kOverwrite`, the object on disk with the matching name is overwritten if such an object exists. If not, a new object with the new name will be created.

```
root[] hpx->Write("newName", TObject::kOverwrite)
```

The `Write` method did not affect the objects in memory at all. However, if the file is closed, the directory is emptied and the objects on the list are deleted.

```
root[] f->Close()
root[] f->ls()
TFile**    hsimple.root
TFile*    hsimple.root
```

In the code snippet above, you can see that the directory is now empty. If you followed along so far, you can see that `c1` which was displaying `hpx` is now blank. Furthermore, `hpx` no longer exists.

```
root[] hpx->Draw()
Error: No symbol hpx in current scope
```

This is important to remember, do not close the file until you are done with the objects or any attempt to reference the objects will fail.

1.2.5 Histograms and the Current Directory

When a histogram is created, it is added by default to the list of objects in the current directory. You can get the list of histograms in a directory and retrieve a pointer to a specific histogram.

```
TH1F *h = (TH1F*)gDirectory->Get("myHist"); // or
TH1F *h = (TH1F*)gDirectory->GetList()->FindObject("myHist");
```

The method `TDirectory::GetList()` returns a `TList` of objects in the directory. You can change the directory of a histogram with the `SetDirectory` method.

```
h->SetDirectory(newDir);
```

If the parameter is 0, the histogram is no longer associated with a directory.

```
h->SetDirectory(0);
```

Once a histogram is removed from the directory, it will no longer be deleted when the directory is closed. It is now your responsibility to delete this histogram object once you are finished with it. To change the default that automatically adds the histogram to the current directory, you can call the static function:

```
TH1::AddDirectory(kFALSE);
```

In this case, you will need to do all the bookkeeping for all the created histograms.

1.2.6 Saving Objects to Disk

In addition to histograms and trees, you can save any object in a ROOT file. For example to save a canvas to the ROOT file you can use either `TObject::Write()` or `TDirectory::WriteTObject()`. The example:

```
root[] c1->Write()
```

This is equivalent to:

```
root[] f->WriteTObject(c1)
```

For objects that do not inherit from `TObject` use:

```
root[] f->WriteObject(ptr,"nameofobject")
```

Another example:

```
root[] TFile *f = new TFile("hsimple.root","UPDATE")
root[] hpx->Draw()
<TCanvas::MakeDefCanvas>: created default TCanvas with name c1
root[] c1->Write()
root[] f->ls()
TFile**      hsimple.root
TFile*       hsimple.root
OBJ: TH1F    hpx      This is the px distribution : 0
KEY: TH1F    hpx;2    This is the px distribution
KEY: TH1F    hpx;1    This is the px distribution
KEY: TH2F    hpxpy;1  py vs px
KEY: TProfile hprof;2  Profile of pz versus px
KEY: TProfile hprof;1  Profile of pz versus px
KEY: TNtuple  ntuple;1  Demo ntuple
KEY: TCanvas  c1;1     c1
```

1.2.7 Saving Collections to Disk

All collection classes inherit from `TCollection` and hence inherit the `TCollection::Write()` method. When you call `TCollection::Write()` each object in the container is written individually into its own key in the file. To write all objects into one key you can specify the name of the key and use the option `TObject::kSingleKey`. For example:

```

root[] TList * list = new TList;
root[] TNamed * n1, * n2;
root[] n1 = new TNamed("name1","title1");
root[] n2 = new TNamed("name2","title2");
root[] list->Add(n1);
root[] list->Add(n2);
root[] gFile->WriteObject(list,"list",TObject::kSingleKey);

```

1.2.8 A TFile Object Going Out of Scope

There is another important point to remember about `TFile::Close` and `TFile::Write`. When a variable is declared on the stack in a function such as in the code below, it will be deleted when it goes out of scope.

```

void foo() {
    TFile f("AFile.root","RECREATE");
}

```

As soon as the function `foo` has finished executing, the variable `f` is deleted. When a `TFile` object is deleted an implicit call to `TFile::Close` is made. This will save only the file descriptor to disk. It contains the file header, the `StreamerInfo` list, the key list, the free segment list, and the end address. See “The Physical Layout of ROOT Files”. The `TFile::Close` does not make a call to `Write()`, which means that the objects in memory will not be saved in the file. You need to explicitly call `TFile::Write()` to save the object in memory to file before the exit of the function.

```

void foo() {
    TFile f("AFile.root","RECREATE");
    ... stuff ...
    f.Write();
}

```

To prevent an object in a function from being deleted when it goes out of scope, you can create it on the heap instead of on the stack. This will create a `TFile` object `f`, that is available on a global scope, and it will still be available when exiting the function.

```

void foo() {
    TFile *f = new TFile("AFile.root","RECREATE");
}

```

1.2.9 Retrieving Objects from Disk

If you have a ROOT session running, please quit and start fresh.

We saw that multiple versions of an object with the same name could be in a ROOT file. In our example, we saved a modified histogram `hpx` to the file, which resulted in two `hpx`'s uniquely identified by the cycle number: `hpx;1` and `hpx;2`. The question is how we can retrieve the right version of `hpx`. When opening the file and using `hpx`, Cling retrieves the one with the highest cycle number. To read the `hpx;1` into memory, rather than the `hpx;2` we would get by default, we have to explicitly get it and assign it to a variable.

```

root[] TFile *f1 = new TFile("hsimple.root")
root[] TH1F *hpx1; f1->GetObject("hpx;1",hpx)
root[] hpx1->Draw()

```

1.2.10 Subdirectories and Navigation

The `TDirectory` class lets you organize its contents into subdirectories, and `TFile` being a descendent of `TDirectory` inherits this ability. Here is an example of a ROOT file with multiple subdirectories as seen in the ROOT browser. To add a subdirectory to a file use `TDirectory::mkdir`. The example below opens the file for writing and creates a subdirectory called “Wed011003”. Listing the contents of the file shows the new directory in the file and the `TDirectory` object in memory.

```

root[] TFile *f = new TFile("AFile.root","RECREATE")
root[] f->mkdir("Wed011003")
(class TDirectory*)0x1072b5c8

```

```

root[] f->ls()
TFile**      AFile.root
TFile*       AFile.root
TDirectory*  Wed011003      Wed011003
KEY: TDirectory  Wed011003;1  Wed011003

```

We can change the current directory by navigating into the subdirectory, and after changing directory; we can see that `gDirectory` is now “Wed011003”.

```

root[] f->cd("Wed011003")
root[] gDirectory->pwd()
AFile.root:/Wed011003

```

In addition to `gDirectory` we have `gFile`, another global that points to the current file. In our example, `gDirectory` points to the subdirectory, and `gFile` points to the file (i.e. the files’ top directory).

```

root[] gFile->pwd()
AFile.root:/

```

Use `cd()` without any arguments to return to the file’s top directory.

```

root[] f->cd()
AFile.root:/

```

Change to the subdirectory again, and create a histogram. It is added to the current directory, which is the subdirectory “Wed011003”.

```

root[] f->cd("Wed011003")
root[] TH1F *histo = new TH1F("histo","histo",10,0,10)
root[] gDirectory->ls()
TDirectory* Wed011003  Wed011003
OBJ: TH1F      histo  histo : 0

```

If you are in a subdirectory and you want to have a pointer to the file containing the subdirectory, you can do:

```

root[] gDirectory->GetFile()

```

If you are in the top directory `gDirectory` is the same as `gFile`. We write the file to save the histogram on disk, to show you how to retrieve it later.

```

root[] f->Write()
root[] gDirectory->ls()
TDirectory*      Wed011003      Wed011003
OBJ: TH1F      histo  histo : 0
KEY: TH1F      histo;1 histo

```

When retrieving an object from a subdirectory, you can navigate to the subdirectory first or give it the path name relative to the file. The read object is created in memory in the current directory. In this first example, we get `histo` from the top directory and the object will be in the top directory.

```

root[] TH1 *h; f->GetObject("Wed011003/histo;1",h)

```

If file is written, a copy of `histo` will be in the top directory. This is an effective way to copy an object from one directory to another. In contrast, in the code box below, `histo` will be in memory in the subdirectory because we changed the current directory.

```

root[] f->cd("Wed011003")
root[] TH1 *h; gDirectory->GetObject("histo;1",h)

```

Note that there is no warning if the retrieving was not successful. You need to explicitly check the value of `h`, and if it is null, the object could not be found. For example, if you did not give the path name the histogram cannot be found and the pointer to `h` is null:

```

root[] TH1 *h; gDirectory->GetObject("Wed011003/histo;1",h)
root[] h
(class TH1*)0x10767de0
root[] TH1 *h; gDirectory->GetObject("histo;1",h)
root[] h
(class TH1*)0x0

```

To remove a subdirectory you need to use `TDirectory::Delete`. There is no `TDirectory::rmdir`. The `Delete` method takes a string containing the variable name and cycle number as a parameter.


```
void Delete(const char *namecycle)
```

The `namecycle` string has the format `name;cycle`. The next are some rules to remember:

- `name = *` means all, but don't remove the subdirectories
- `cycle =*` means all cycles (memory and file)
- `cycle ="` means apply to a memory object
- `cycle = 9999` also means apply to a memory object
- `namecycle = "` means the same as `namecycle = "T*"`
- `namecycle = T*` delete subdirectories

For example to delete a directory from a file, you must specify the directory cycle:

```
root[] f->Delete("Wed011003;1")
```

Some other examples of `namecycle` format are:

- `foo:delete` the object named `foo` from memory
- `foo;1`: delete the cycle 1 of the object named `foo` from the file
- `foo;*`: delete all cycles of `foo` from the file and also from memory
- `*;2`: delete all objects with cycle number 2 from the file
- `*;*`: delete all objects from memory and from the file
- `T;*`: delete all objects from memory and from the file including all subdirectories

1.3 Streamers

To follow the discussion on **Streamers**, you need to know what a *simple* data type is. A variable is of a simple data type if it cannot be decomposed into other types. Examples of simple data types are longs, shorts, floats, and chars. In contrast, a variable is of a *composite* data type if it can be decomposed. For example, classes, structures, and arrays are composite types. Simple types are also called primitive types, basic types, and Cling sometimes calls them fundamental types.

When we say, “writing an object to a file”, we actually mean writing the current values of the data members. The most common way to do this is to decompose (also called the serialization of) the object into its data members and write them to disk. The decomposition is the job of the **Streamer**. Every class with ambitions to be stored in a file has a **Streamer** that decomposes it and “streams” its members into a buffer.

The methods of the class are not written to the file, it contains only the persistent data members. To decompose the parent classes, the **Streamer** calls the **Streamer** of the parent classes. It moves up the inheritance tree until it reaches an ancestor without a parent. To serialize the object data members it calls their **Streamer**. They in turn move up their own inheritance tree and so forth. The simple data members are written to the buffer directly. Eventually the buffer contains all simple data members of all the classes that make up this particular object. Data members that are references (as `MyClass &fObj;`) are never saved, it is always the responsibility of the object's constructor to set them properly.

1.3.1 Automatically Generated Streamers

A **Streamer** usually calls other **Streamers**: the **Streamer** of its parents and data members. This architecture depends on all classes having **Streamers**, because eventually they will be called. To ensure that a class has a **Streamer**, `rootcling` automatically creates one in the `ClassDef` macro that is defined in `$ROOTSYS/include/Rtypes.h`. `ClassDef` defines several methods for any class, and one of them is the **Streamer**. The automatically generated **Streamer** is complete and can be used as long as no customization is needed.

The `Event` class is defined in `$ROOTSYS/test/Event.h`. Looking at the class definition, we find that it inherits from `TObject`. It is a simple example of a class with diverse data members.

```
class Event : public TObject {
private:
    TDirectory    *fTransient;           /// current directory
    Float_t      fPt;                   /// transient value
    char         fType[20];
```

```

Int_t      fNtrack;
Int_t      fNseg;
Int_t      fNvertex;
UInt_t     fFlag;
Float_t    fTemperature;
EventHeader fEvtHdr;          /// don't split
TClonesArray *fTracks;      ///->
TH1F       *fH;             ///->
Int_t      fMeasures[10];
Float_t    fMatrix[4][4];
Float_t    *fClosestDistance; ///[fNvertex]
...

```

The Event class is added to the dictionary by the rootcling utility. This is the rootcling statement in the \$ROOTSYS/test/Makefile:

```
@rootcling -f EventDict.cxx -c Event.h EventLinkDef.h
```

The EventDict.cxx file contains the automatically generated Streamer for Event:

```

void Event::Streamer(TBuffer &R__b){
    // Stream an object of class Event.
    if (R__b.IsReading()) {
        Event::Class()->ReadBuffer(R__b, this);
    } else {
        Event::Class()->WriteBuffer(R__b, this);
    }
}

```

When writing an Event object, TClass::WriteBuffer is called. WriteBuffer writes the current version number of the Event class, and its contents into the buffer R__b. The Streamer calls TClass::ReadBuffer when reading an Event object. The ReadBuffer method reads the information from buffer R__b into the Event object.

1.3.2 Transient Data Members (///*!)*

To prevent a data member from being written to the file, insert a “!” as the first character after the comment marks. It tells ROOT not to save that data member in a root file when saving the class. For example, in this version of Event, the fPt and fTransient data members are not persistent.

```

class Event : public TObject {
private:
    TDirectory *fTransient; /// current directory
    Float_t fPt;           /// transient value
    ...

```

1.3.3 The Pointer to Objects (///*->*)

The string “->” in the comment field of the members *fH and *fTracks instruct the automatic Streamer to assume these will point to valid objects and the Streamer of the objects can be called rather than the more expensive R__b << fH. It is important to note that no check is done on the validity of the pointer value. In particular if the pointer points, directly or indirectly, back to the current object, this will result in an infinite recursion and the abrupt end of the process.

```

TClonesArray *fTracks;      ///->
TH1F       *fH;           ///->

```

1.3.4 Variable Length Array

When the Streamer comes across a pointer to a simple type, it assumes it is an array. Somehow, it has to know how many elements are in the array to reserve enough space in the buffer and write out the appropriate number of elements. This is done in the class definition. For example:

```

class Event : public TObject {
private:

```

```

char          fType[20];
Int_t         fNtrack;
Int_t         fNseg;
Int_t         fNvertex;
...
Float_t       *fClosestDistance;  //[fNvertex]

```

The array `fClosestDistance` is defined as a pointer of floating point numbers. A comment mark (`//`), and the number in square brackets tell the `Streamer` the length of the array for this object. In general the syntax is:

```
<simple type> *<name>//[<length>]
```

The length cannot be an expression. If a variable is used, it needs to be an integer data member of the class. It must be defined ahead of its use, or in a base class.

The same notation also applies to variable length array of object and variable length array of pointer to objects.

```

MyObject *obj;  //[fNojbs]
MyObject **objs;  //[fDatats]

```

1.3.5 Double32_t

Math operations very often require double precision, but on saving single usually precision is sufficient. For this purpose we support the typedef `Double32_t` which is stored in memory as a double and on disk as a float or integer. The actual size of disk (before compression) is determined by the parameter next to the data member declaration. For example:

```
Double32_t m_data;  //[min,max,<nbits>]
```

If the comment is absent or does not contain `min`, `max`, `nbits`, the member is saved as a `float`.

If `min` and `max` are present, they are saved with 32 bits precision. `min` and `max` can be explicit values or expressions of values known to `Cling` (e.g. `pi`).

If `nbits` is present, the member is saved as `int` with `nbits` bits precision. For more details see the io tutorials `double32.C`.

1.3.6 Prevent Splitting (//||)

If you want to prevent a data member from being split when writing it to a tree, append the characters `||` right after the comment string. This only makes sense for object data members. For example:

```
EventHeader    fEvtHdr;  ///| do not split the header
```

1.3.7 Streamers with Special Additions

Most of the time you can let `rootcling` generate a `Streamer` for you. However if you want to write your own `Streamer` you can do so. For some classes, it may be necessary to execute some code before or after the read or write block in the automatic `Streamer`. For example after the execution of the read block, one can initialize some non persistent members. There are two reasons why you would need to write your own `Streamer`: 1) if you have a non-persistent data member that you want to initialize to a value depending on the read data members; 2) if you want or need to handle the schema evolution on your own. Note that an alternative for those cases is to consider write a schema evolution rule.

First, you need to tell `rootcling` not to build a `Streamer` for you. The input to the `rootcling` command (in the `makefile`) is a list of classes in a `LinkDef.h` file. For example, the list of classes for `Event` is listed in `$ROOTSYS/test/EventLinkDef.h`. The “-” at the end of the class name tells `rootcling` not to generate a `Streamer`. In the example, you can see the `Event` class is the only one for which `rootcling` is instructed not to generate a `Streamer`.

```

#ifdef __ROOTCLING__

#pragma link off all globals;
#pragma link off all classes;
#pragma link off all functions;
#pragma link C++ class EventHeader+;
#pragma link C++ class Event-;

```

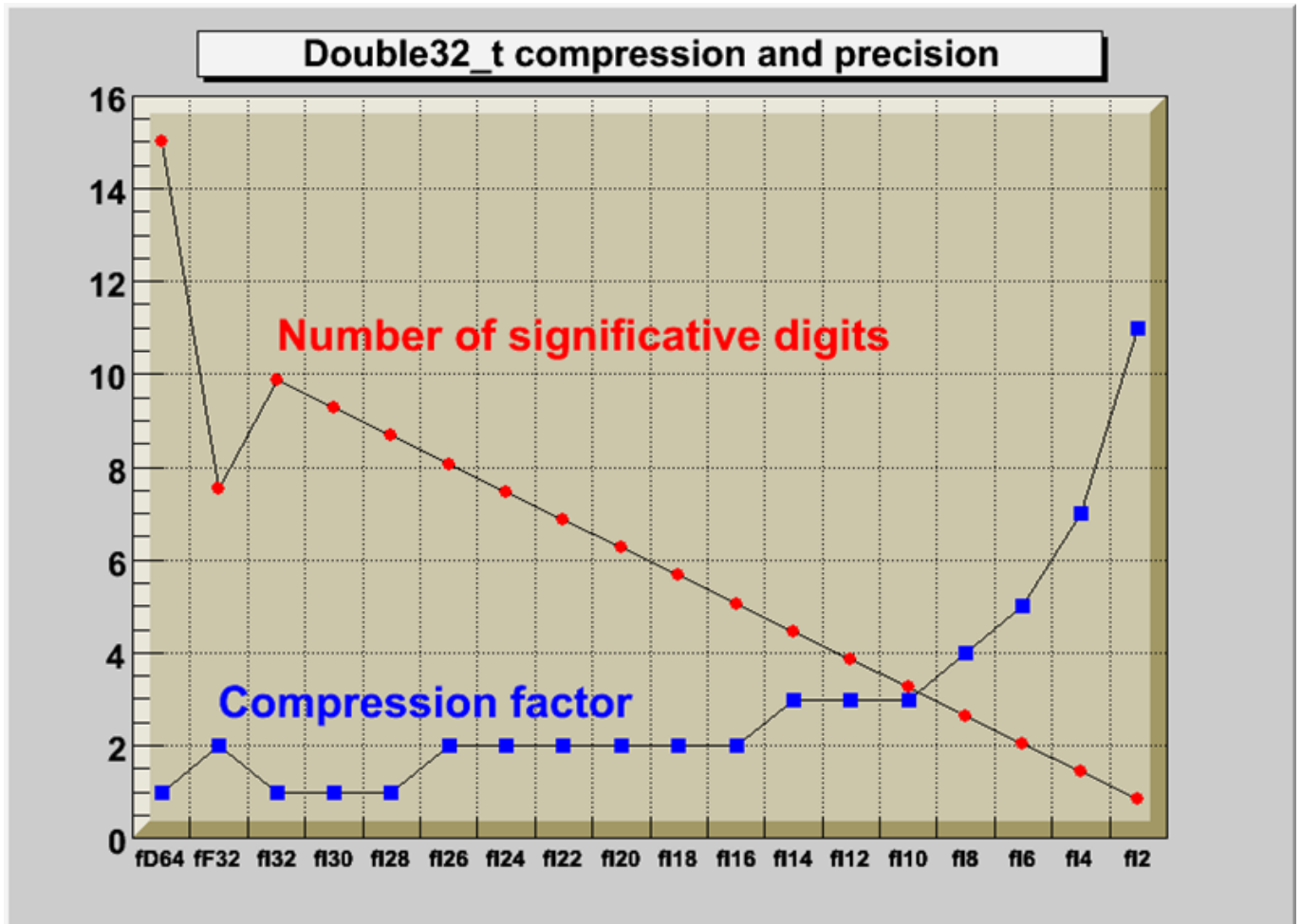


Figure 1.5: Compression and precision of Double32_t

```
#pragma link C++ class HistogramManager+;
#pragma link C++ class Track+;

#endif
#pragma link C++ class EventHeader+;
```

The “+” sign tells `rootcling` to use the new `Streamers` system introduced in ROOT 3.0. The following is an example of a customized `Streamer` for `Event`. The `Streamer` takes a `TBuffer` as a parameter, and first checks to see if this is a case of reading or writing the buffer.

```
void Event::Streamer(TBuffer &R_b) {
    if (R_b.IsReading()) {
        Event::Class()->ReadBuffer(R_b, this);
        fTransient = gDirectory; //save current directory
        fPt= TMath::Sqrt(fPx*fPx + fPy*fPy + fPz*fPz);
    } else {
        Event::Class()->WriteBuffer(R_b, this);
    }
}
```

1.3.8 Writing Objects

The `Streamer` decomposes the objects into data members and writes them to a buffer. It does not write the buffer to a file, it simply populates a buffer with bytes representing the object. This allows us to write the buffer to a file or do anything else we could do with the buffer. For example, we can write it to a socket to send it over the network. This is beyond the scope of this chapter, but it is worthwhile to emphasize the need and advantage of separating the creation of the buffer from its use. Let us look how a buffer is written to a file. The dictionary for a class needs to be loaded before any object of that type can be saved.

The `TObject::Write` method does the following:

- Creates a `TKey` object in the current directory
- Creates a `TBuffer` object which is part of the newly created `TKey`
- Fills the `TBuffer` with a call to the `class::Streamer` method
- Creates a second buffer for compression, if needed
- Reserves space by scanning the `TFree` list. At this point, the size of the buffer is known.
- Writes the buffer to the file
- Releases the `TBuffer` part of the key

In other words, the `TObject::Write` calls the `Streamer` method of the class to build the buffer. The buffer is in the key and the key is written to disk. Once written to disk the memory consumed by the buffer part is released. The key part of the `TKey` is kept.

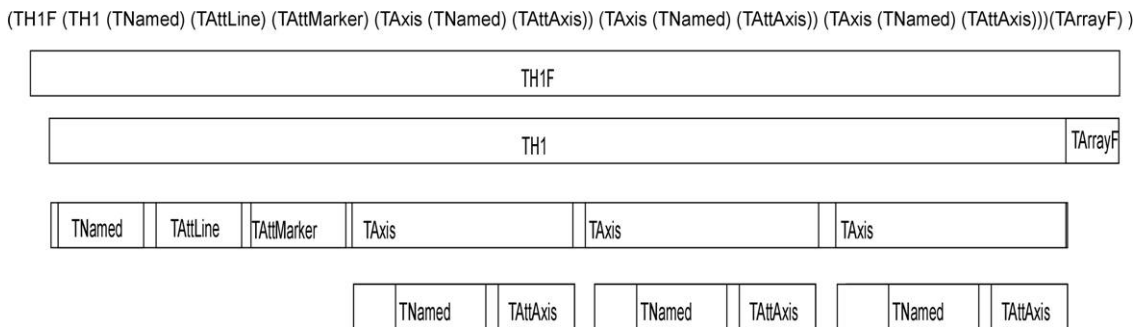


Figure 1.6: A diagram of a streamed TH1F in the buffer

The key consumes about 60 bytes, whereas the buffer, since it contains the object data, can be very large.

1.3.9 Ignore Object Streamers

Your class can ignore the `TObject` Streamer with the `MyClass->Class::IgnoreObjectStreamer()` method. When the class `kIgnoreTObjectStreamerbit` is set (by calling the `IgnoreTObjectStreamer` method), the automatically generated Streamer will not call `TObject::Streamer`, and the `TObject` part of the class is not streamed to the file. This is useful in case you do not use the `TObject` `fBits` and `fUniqueID` data members. You gain space on the file, and you do not lose functionality if you do not use the `fBits` and `fUniqueID`. See “The Role of `TObject`” on the use of `fBits` and `fUniqueID`.

1.3.10 Streaming a `TClonesArray`

When writing a `TClonesArray` it bypasses by default the Streamer of the member class and uses a more efficient internal mechanism to write the members to the file. You can override the default and specify that the member class Streamer is used by setting the `TClonesArray::BypassStreamer` bit to false:

```
TClonesArray *fTracks;
fTracks->BypassStreamer(kFALSE);    // use the member Streamer
```

When the `kBypassStreamer` bit is set, the automatically generated Streamer can call directly the method `TClass::WriteBuffer`. Bypassing the Streamer improves the performance when writing/reading the objects in the `TClonesArray`. However, the drawback is when a `TClonesArray` is written with `split=0` bypassing the Streamer, the `StreamerInfo` of the class in the array being optimized, one cannot later use the `TClonesArray` with `split > 0`. For example, there is a problem with the following scenario: a class `Foo` has a `TClonesArray` of `Bar` objects the `Foo` object is written with `split=0` to `Tree T1`. In this case the `StreamerInfo` for the class `Bar` is created in optimized mode in such a way that data members of the same type are written as an array improving the I/O performance. In a new program, `T1` is read and a new `Tree T2` is created with the object `Foo` in `split > 1`.

When the `T2` branch is created, the `StreamerInfo` for the class `Bar` is created with no optimization (mandatory for the `split` mode). The optimized `Bar` `StreamerInfo` is going to be used to read the `TClonesArray` in `T1`. The result will be `Bar` objects with data member values not in the right sequence. The solution to this problem is to call `BypassStreamer(kFALSE)` for the `TClonesArray`. In this case, the normal `Bar::Streamer` function will be called. The `Bar::Streamer` function works OK independently if the `Bar` `StreamerInfo` had been generated in optimized mode or not.

1.4 Pointers and References in Persistency

An object pointer as a data member presents a challenge to the streaming software. If the object pointed to is saved every time, it could create circular dependencies and consume a large amount of disk space. The network of references must be preserved on disk and recreated upon reading the file.

If you use independent I/O operations for pointers and their referenced objects you can use the `TRef` class. Later in this section is an example that compares disk space, memory usage, and I/O times of C++ pointers and `TRefs`. In general, a `TRef` is faster than C++ but the advantage of a C++ pointer is that it is already C++.

1.4.1 Streaming C++ Pointers

When ROOT encounters a pointer data member it calls the Streamer of the object and labels it with a unique object identifier. The object identifier is unique for one I/O operation. If there is another pointer to the object in the same I/O operation, the first object is referenced i.e. it is not saved again. When reading the file, the object is rebuilt and the references recalculated.

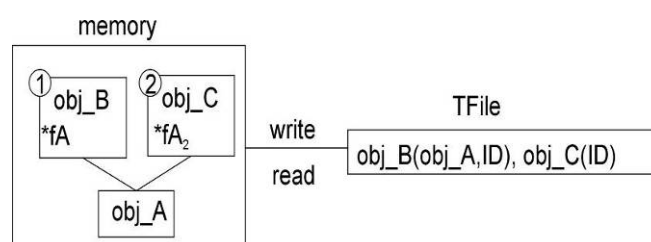


Figure 1.7: Streaming object pointers

In this way, the network of pointers and their objects is rebuilt and ready to use the same way it was used before it was persistent. If the pointer hold the address of an object which is embedded in another object (as opposed to being pointed to by a pointer), the object will be duplicated at read time. To avoid this, make the pointer a transient data member.

1.4.2 Motivation for the TRef Class

If the object is split into several files or into several branches of one or more **TTrees**, standard C++ pointers cannot be used because each I/O operation will write the referenced objects, and multiple copies will exist. In addition, if the pointer is read before the referenced object, it is null and may cause a run time system error. To address these limitations, ROOT offers the **TRef** class.

TRef allows referencing an object in a different branch and/or in a different file. **TRef** also supports the complex situation where a **TFile** is updated multiple times on the same machine or a different machine. When a **TRef** is read before its referenced object, it is null. As soon as the referenced object is read, the **TRef** points to it. In addition, one can specify an action to be taken by **TRef** in the case it is read before its reference object (see “Action on Demand” below).

1.4.3 Using TRef

A **TRef** is a lightweight object pointing to any **TObject**. This object can be used instead of normal C++ pointers in case:

- The referenced object R and the pointer P are not written to the same file
- P is read before R
- R and P are written to different Tree branches

Below is a line from the example in `$ROOTSYS/test/Event.cxx`.

```
TRef   fLastTrack;           //pointer to last track
...
Track *track = (Track*)fTracks->ConstructedAt(fNtrack++);
track->Set(random);
// Save reference to last Track in the collection of Tracks
fLastTrack = track;
```

The `track` and its reference `fLastTrack` can be written with two separate I/O calls in the same or in different files, in the same or in different branches of a **TTree**. If the **TRef** is read and the referenced object has not yet been read, **TRef** will return a null pointer. As soon as the referenced object will be read, **TRef** will point to it.

1.4.4 How Does It Work?

A **TRef** is itself a **TObject** with an additional transient pointer `fPID`. When a **TRef** is used to point to a **TObject***R, for example in a class with

```
TRef P;
```

one can do:

```
P = R;           //to set the pointer
```

When the statement `P = R` is executed, the following happens:

- The pointer `fPID` is set to the current `TProcessID` (see below).
- The current `ObjectNumber` (see below) is incremented by one.
- `R.fUniqueID` is set to `ObjectNumber`.
- In the `fPID` object, the element `fObjects[ObjectNumber]` is set to R
- `P.fUniqueID` is also set to `ObjectNumber`.

After having set P, one can immediately return the value of R using `P.GetObject()`. This function returns the `fObjects[fUniqueID]` from the `fPID` object.

When the **TRef** is written, the process id number `pidf` of `fPID` is written in addition to the **TObject** part of the **TRef** (`fBits`, `fUniqueID`). When the **TRef** is read, its pointer `fPID` is set to the value stored in the **TObjArray** of `TFile::fProcessIDs(fProcessIDs[pidf])`.

When a referenced object is written, `TObject::Streamer` writes the `pidf` in addition to the standard `fBits` and `fUniqueID`. When `TObject::Streamer` reads a reference object, the `pidf` is read. At this point, the referenced object is entered into the table of objects of the **TProcessID** corresponding to `pidf`.

WARNING: If `MyClass` is the class of the referenced object, The **TObject** part of `MyClass` must be streamed. One should not call `MyClass::Class()->IgnoreTObjectStreamer()`.

1.4.4.1 TProcessID and TUUID

A **TProcessID** uniquely identifies a ROOT job. The **TProcessID** title consists of a **TUUID** object, which provides a globally unique identifier. The **TUUID** class implements the UUID (Universally Unique Identifier), also known as GUID (Globally Unique Identifier). A UUID is 128 bits long, and if generated according to this algorithm, is either guaranteed to be different from all other UUID generated until 3400 A.D. or extremely likely to be different.

The **TROOT** constructor automatically creates a **TProcessID**. When a **TFile** contains referenced objects, the **TProcessID** object is written to the file. If a file has been written in multiple sessions (same machine or not), a **TProcessID** is written for each session. The **TProcessID** objects are used by **TRef** to uniquely identify the referenced **TObject**.

When a referenced object is read from a file (its bit `kIsReferenced` is set), this object is entered into the objects table of the corresponding **TProcessID**. Each **TFile** has a list of **TProcessIDs** (see `TFile::fProcessIDs`) also accessible from `TProcessID::fgPIDs(for all files)`. When this object is deleted, it is removed from the table via the cleanup mechanism invoked by the **TObject** destructor. Each **TProcessID** has a table (`TObjArray *fObjects`) that keeps track of all referenced objects. If a referenced object has `afUniqueID`, a pointer to this unique object may be found using `fObjects->At(fUniqueID)`. In the same way, when a **TRef::GetObject** is called, `GetObject` uses its own `fUniqueID` to find the pointer to the referenced object. See `TProcessID::GetObjectWithIDandPutObjectWithID`.

1.4.4.2 Object Number

When an object is referenced, a unique identifier is computed and stored in both the `fUniqueID` of the referenced and referencing object. This `uniqueID` is computed by incrementing by one the static global in `TProcessID::fgNumber`. The `fUniqueID` is the serial object number in the current session. One can retrieve the current `fgNumber` value by calling the static function `TProcessID::GetObjectCount` at any time or can set this number by `TProcessID::SetObjectCount`. To avoid a growing table of `fObjects` in **TProcessID**, in case, for example, one processes many events in a loop, it might be necessary to reset the object number at the end of processing of one event. See an example in `$ROOTSYS/test/Event.cxx` (look at function `Build`). The value of `ObjectNumber` may be saved at the beginning of one event and reset to this original value at the end of the event. These actions may be nested.

```
saveNumber = TProcessID::GetObjectCount();
...
TProcessID::SetObjectCount(savedNumber);
```

1.4.5 Action on Demand

The normal behavior of a **TRef** has been described above. In addition, **TRef** supports “Actions on Demand”. It may happen that the referenced object is not yet in the memory, on a separate file or not yet computed. In this case, **TRef** is able to execute automatically an action:

- Call to a compiled function (static function of member function)
- Call to an interpreted function
- Execution of a Cling script

1.4.5.1 How to Select This Option?

In the definition of the **TRef** data member in the original class, do:

```
TRef fRef; //EXEC:execName points to something
```


When the special keyword "EXEC:" is found in the comment field of the member, the next string is assumed to be the name of a **TExec** object. When a file is connected, the dictionary of the classes on the file is read in memory (see **TFile::ReadStreamInfo**). When the **TStreamerElement** object is read, a **TExec** object is automatically created with the name specified after the keyword "EXEC:" in case a **TExec** with a same name does not already exist.

The action to be executed via **this TExec** can be specified with:

- A call to the **TExec** constructor, if the constructor is called before
- Opening the file.
- A call to **TExec::SetAction** at any time.

One can compute a pointer to an existing **TExec** with a name with:

```
TExec *myExec = gROOT->GetExec(execName);
myExec->SetAction(actionCommand);
```

The parameter **actionCommand** is a string containing a Cling instruction. Examples:

```
myExec->SetAction("LoadHits()");
myExec->SetAction(".x script.C");
```

When a **TRef** is de-referenced via **TRef::GetObject**, its **TExec**** is automatically executed. The **TExec** function/script can do one or more of the following:**

- Load a file containing the referenced object. This function typically looks in the file catalog.
- Compute a pointer to the referenced object and communicate this pointer back to the calling function **TRef::SetObject** via:

```
TRef::SetObject(object)
```

As soon as an object is returned to **GetObject**, the **fUniqueID** of the **TRef** is set to the **fUniqueID** of the referenced object. At the next call to **GetObject**, the pointer stored in **fPid:fObjects[fUniqueID]** will be returned directly. An example of action on demand is in **\$ROOTSYS/test/Event.h**:

```
TRef    fWebHistogram;    //EXEC:GetWebHistogram
```

When calling **fWebHistogram.GetObject()**, the function **GetObject** will automatically invoke the script **GetWebHistogram.C** via the interpreter. An example of a **GetWebHistogram.C** script is shown below:

```
void GetWebHistogram() {
    TFile *f=TFile::Open("http://root.cern.ch/files/pippa.root");
    f->cd("DM/CJ");
    TH1 *h6 = (TH1*)gDirectory->Get("h6");
    h6->SetDirectory(0);
    delete f;
    TRef::SetObject(h6);
}
```

In the above example, a call to **fWebHistogram.GetObject()** executes the script with the function **GetWebHistogram**. This script connects a file with histograms: **pippa.root** on the ROOT Web site and returns the object **h6** to **TRef::GetObject**.

```
TRef    fWebHistogram;    //EXEC:GetWebHistogram()
```

Note that if the definition of the **TRef fWebHistogram** had been changed the compiled or interpreted function **GetWebHistogram()** would have been called instead of the Cling script **GetWebHistogram.C**.

1.4.6 Array of TRef

When storing multiple **TRefs**, it is more efficient to use a **TRefArray**. The efficiency is due to having a single pointer **fPID** for all **TRefs** in the array. It has a dynamic compact table of **fUniqueIDs**. We recommend that you use a **TRefArray** rather than a collection of **TRefs**.

Example:

- Suppose a **TObjArray *mytracks** containing a list of **Track** objects.
- Suppose a **TRefArray *pions** containing pointers to the pion tracks in **mytracks**. This list is created with statements like: **pions->Add(track)**;
- Suppose a **TRefArray *muons** containing pointers to the muon tracks in **mytracks**.

The 3 arrays `mytracks`, `pions` and `muons` may be written separately.

1.5 Schema Evolution

Schema evolution is a problem faced by long-lived data. When a schema changes, existing persistent data can become inaccessible unless the system provides a mechanism to access data created with previous versions of the schema. In the lifetime of collaboration, the class definitions (i.e. the schema) are likely to change frequently. Not only can the class itself change, but any of its parent classes or data member classes can change also. This makes the support for schema evolution necessary.

ROOT fully supports schema evolution. The next figure below illustrates some of the scenarios.

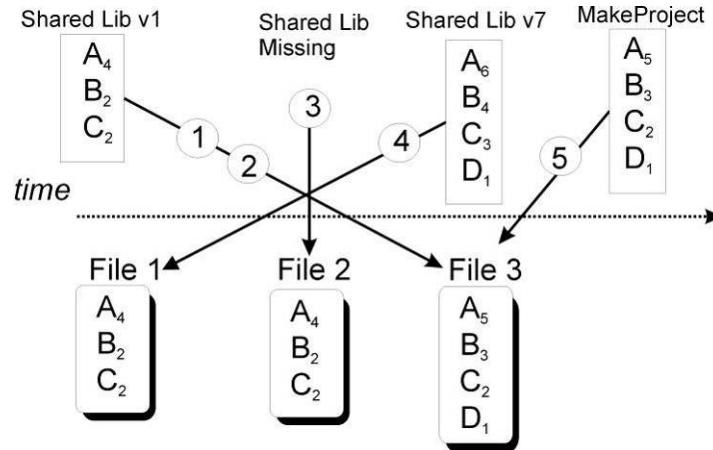


Figure 1.8: The ROOT schema evolution

The top half represents different versions of the shared library with the class definitions. These are the in-memory class versions. The bottom half represents data files that contain different versions of the classes.

- An old version of a shared library and a file with new class definitions - this can be the case when someone has not updated the library and is reading a new file.
- Reading a file with a shared library that is missing a class definition (i.e. missing class D).
- Reading a file without any class definitions. This can be the case where the class definition is lost, or unavailable.
- The current version of a shared library and an old file with old class versions (backward compatibility). This is often the case when reading old data.
- Reading a file with a shared library built with `MakeProject`. This is the case when someone has already read the data without a shared library and has used ROOT `MakeProject` feature to reconstruct the class definitions and shared library (`MakeProject` is explained in detail later on).

In case of a mismatch between the in-memory version and the persistent version of a class, ROOT maps the persistent one to the one in memory. This allows you to change the class definition at will, for example:

- Change the order of data members in the class.
- Add new data members. By default, the value of the missing member will be 0 or in case of an object it will be set to null.
- Remove data members.
- Move a data member to a base class or vice-versa.
- Change the type of a member if it is a simple type or a pointer to a simple type. If a loss of precision occurs, a warning is given.
- Add or remove a base class

ROOT supports schema evolution by keeping a class description of each version of the class that was ever written to disk, with the class. When it writes an object to file, it also writes the description of the current class version along with it. This description is implemented in the `StreamerInfo` class.

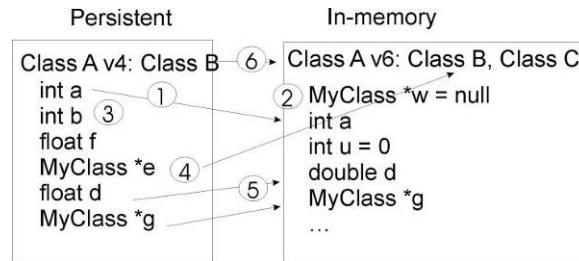


Figure 1.9: The schema evolution for objects written on disk and in memory

1.5.1 The TStreamerInfo Class

Each class has a list of `StreamerInfo` objects, one for each version of the class if that version was written to disk at least once. When reading an object from a file, the system uses the `StreamerInfo` list to decode an object into the current version. The `StreamerInfo` is made up of `TStreamerElements`. Each describes one persistent data member of the class. By default, all data members of a class are persistent. To exclude a data member (i.e. make it not persistent), add a “!” after the comment marks. For example the pointer `*fPainter` of a `TH1` is not persistent:

```
TVirtualHistPainter* fPainter ///pointer to histogram painter
```

1.5.2 The TStreamerElement Class

A `TStreamerElement` describes a data member of a simple type, object, array, pointer, or container. The offset in the `TStreamerElement` is the starting address of the data for that data member.

```
BASE TNamed offset= 0 type=67 The basis for a named object
BASE TAttLine offset= 28 type= 0 Line attributes
```

In this example, the `TNamed` data starts at byte 0, and `TAttLine` starts at byte 28. The offset is machine and compiler dependent and is computed when the `StreamerInfo` is analyzed. The types are defined in the file `TStreamerInfo.h` and listed here:

```
enum EReadWrite {
kBase=0, kChar=1, kShort=2, kInt=3, kLong=4,
kFloat=5, kCounter=6, kCharStar=7, kDouble=8, kUChar=11,
kUShort=12, kUInt=13, kULong=14, kBits=15, kOffsetL=20,
kOffsetP=40, kObject=61, kAny=62, kObjectp=63, kObjectP=64,
kTString=65, kTObject=66, kTNamed=67, kSkip=100, kSkipL=120,
kSkipP=140, kConv=200, kConvL=220, kConvP=240, kStreamer=500,
kStreamLoop=501, kMissing=99999
};
```

The method `TClass::GetStreamerInfo` analyzes the `StreamerInfo` the same way it would be analyzed by referring to the class. While analyzing the `StreamerInfo`, it computes the offsets. The type field is the type of the `TStreamerElement`. It is specific to the `StreamerInfo` definition.

1.5.3 Example: TH1 StreamerInfo

In the `StreamerInfo` of the `TH1` class we see the four base classes: `TNamed`, `TAttLine`, `TAttFill`, and `TAttMarker`. These are followed by a list of the data members. Each data member is implemented by a `TStreamerElement` object.

```
root[] TH1::Class()->GetStreamerInfo()->ls()
StreamerInfo for class: TH1, version=3
BASE TNamed offset= 0 type=67 The basis for a named object
BASE TAttLine offset= 28 type= 0 Line attributes
BASE TAttFill offset= 40 type= 0 Fill area attributes
BASE TAttMarker offset= 48 type= 0 Marker attributes
Int_t fNcells offset= 60 type= 3 number of bins(1D
TAxis fXaxis offset= 64 type=61 X axis descriptor
TAxis fYaxis offset=192 type=61 Y axis descriptor
TAxis fZaxis offset=320 type=61 Z axis descriptor
Short_t fBarOffset offset=448 type= 2(1000*offset)for bar charts or legos
Short_t fBarWidth offset=450 type= 2 (1000*width)for bar charts or legos
```

```

Stat_t  fEntries      offset=452 type= 8 Number of entries
Stat_t  fTsumw        offset=460 type= 8 Total Sum of weights
Stat_t  fTsumw2       offset=468 type= 8 Total Sum of squares of weights
Stat_t  fTsumwx       offset=476 type= 8 Total Sum of weight*X
Stat_t  fTsumwx2      offset=484 type= 8 Total Sum of weight*X*X
Double_t fMaximum     offset=492 type= 8 Maximum value for plotting
Double_t fMinimum     offset=500 type= 8 Minimum value for plotting
Double_t fNormFactor  offset=508 type= 8 Normalization factor
TArrayD fContour      offset=516 type=62 Array to display contour levels
TArrayD fSumw2        offset=528 type=62 Array of sum of squares of weights
TString fOption       offset=540 type=65 histogram options
TList*  fFunctions    offset=548 type=63 ->Pointer to list of functions
i= 0, TNamed          type= 67, offset= 0, len=1, method=0
i= 1, TAttLine        type= 0, offset= 28, len=1, method=142484480
i= 2, TAttFill        type= 0, offset= 40, len=1, method=142496992
i= 3, TAttMarker      type= 0, offset= 48, len=1, method=142509704
i= 4, fNcells         type= 3, offset= 60, len=1, method=0
i= 5, fXaxis          type= 61, offset= 64, len=1, method=1081287424
i= 6, fYaxis          type= 61, offset=192, len=1, method=1081287548
i= 7, fZaxis          type= 61, offset=320, len=1, method=1081287676
i= 8, fBarOffset      type= 22, offset=448, len=2, method=0
i= 9, fEntries        type= 28, offset=452, len=8, method=0
i=10, fContour        type= 62, offset=516, len=1, method=1081287804
i=11, fSumw2          type= 62, offset=528, len=1, method=1081287924
i=12, fOption         type= 65, offset=540, len=1, method=1081288044
i=13, fFunctions      type= 63, offset=548, len=1, method=1081288164

```

1.5.4 Optimized StreamerInfo

The entries starting with “i = 0” is the optimized format of the `StreamerInfo`. Consecutive data members of the same simple type and size are collapsed and read at once into an array for performance optimization.

```

i= 0, TNamed          type= 67, offset= 0, len=1, method=0
i= 1, TAttLine        type= 0, offset= 28, len=1, method=142484480
i= 2, TAttFill        type= 0, offset= 40, len=1, method=142496992
i= 3, TAttMarker      type= 0, offset= 48, len=1, method=142509704

```

For example, the five data members beginning with `fEntries` and the three data members beginning with `fMaximum`, are put into an array called `fEntries` (i = 9) with the length 8.

```

i= 9, fEntries        type= 28, offset=452, len=8, method=0

```

Only simple type data members are combined, object data members are not combined. For example the three axis data members remain separate. The “method” is a handle to the method that reads the object.

1.5.5 Automatic Schema Evolution

When a class is defined in ROOT, it must include the `ClassDef` macro as the last line in the header file inside the class definition. The syntax is:

```
ClassDef(<ClassName>,<VersionNumber>)
```

The version number identifies this particular version of the class. When a class has version 0 it is not stored in a root file but its base class(es) is(are). The reason can be that this class has no data members worth saving or all real info is in the base classes. The version number is written to the file in the `Streamer` by the call `TBuffer::WriteVersion`. You, as the designer of the class, do not need to do any manual modification in the `Streamer`. ROOT schema evolution mechanism is automatic and handled by the `StreamerInfo`.

1.5.6 Manual Data Model Evolution Capabilities

The automatic data model schema evolution implemented in ROOT makes it possible to read back the serialized data object in the situation when the definition of the classes those objects represent changed slightly (some of the data members were removed or some new ones added). It is also possible to manually specify the rules for more

sophisticated data transformations done while reading to load the serialized objects into data structures that changed quite significantly.

ROOT provides two interface enabling users to specify the conversion rules. The first way is to define a rule in the dictionary file and the second way is to insert it to the TClass object using the C++ API.

There are two types of conversion rules. The first of them, the normal rules, are the ones that should be used in the most of the cases. They provide a buffered input data and an address of the in-memory target object and allow user to specify the conversion function mapping the data being read to the output format. The second type of the rules, the raw rules, also provide the pointer to the target object but the input is a raw TBuffer object containing the input data member declared as an input to the rule. This type of a rule is provided mainly to handle the file format changes that couldn't have been handled otherwise and in general should not be used unless there is no other option.

1.5.6.1 The dictionaries

The most convenient place to specify the conversion rules is a dictionary. One can do that either in a LinkDef file or in the selection xml file being fed to genreflex. The syntax of the rules is the following:

- For dictionaries created from a LinkDef file:

```
#pragma read \
    sourceClass="ClassA" \
    source="double m_a; double m_b; double m_c" \
    version="[4-5,7,9,12-]" \
    checksum="[12345,123456]" \
    targetClass="ClassB" \
    target="m_x" \
    embed="true" \
    include="iostream,cstdlib" \
    code="{m_x = onfile.m_a * onfile.m_b * onfile.m_c; }" \

#pragma readraw \
    sourceClass="TAxis" \
    source="fXbins" \
    targetClass="TAxis" \
    target="fXbins" \
    version="[-5]" \
    include="TAxis.h" \
    code="\
{\
Float_t * xbins=0; \
Int_t n = buffer.ReadArray( xbins ); \
fXbins.Set( xbins ); \
}"
```

- For REFLEX dictionaries:

```
<ioread sourceClass="ClassA"
    source="double m_a; double m_b; double m_c"
    version="[4-5,7,9,12-]"
    checksum="[12345,123456]"
    targetClass="ClassB"
    target="m_x"
    embed="true"
    include="iostream,cstdlib">
<![CDATA[
    m_x = onfile.m_a * onfile.m_b * onfile.m_c;
]] >
</ioread>

<ioreadraw sourceClass="TAxis"
    source="fXbins"
    targetClass="TAxis"
    target="fXbins"
```

```

        version="[-5]"
        include="TAxis.h">
<![CDATA[
    Float_t *xbins = 0;
    Int_t n = buffer.ReadArray( xbins );
    fXbins.Set( xbins );
]] >
</ioreadraw>

```

The variables in the rules have the following meaning:

- sourceClass
 - The field defines the on-disk class that is the input for the rule.
- source
 - A semicolon-separated list of values defining the source class data members that need to be cached and accessible via object proxy when the rule is executed. The values are either the names of the data members or the type-name pairs (separated by a space). If types are specified then the ondisk structure can be generated and used in the code snippet defined by the user.
- version
 - A list of versions of the source class that can be an input for this rule. The list has to be enclosed in a square bracket and be a comma-separated list of versions or version ranges. The version is an integer number, whereas the version range is one of the following:
 - “a-b”: a and b are integers and the expression means all the numbers between and including a and b
 - “-a”: a is an integer and the expression means all the version numbers smaller than or equal to a
 - “a-”: a is an integer and the expression means all the version numbers greater than or equal to a
- checksum
 - A list of checksums of the source class that can be an input for this rule. The list has to be enclosed in a square brackets and is a comma-separated list of integers.
- targetClass
 - The field is obligatory and defines the name of the in-memory class that this rule can be applied to.
- target
 - A semicolon-separated list of target class data member names that this rule is capable of calculating.
- embed
 - This property tells the system if the rule should be written in the output file if some objects of this class are serialized.
- include
 - A list of header files that should be included in order to provide the functionality used in the code snippet; the list is comma delimited.
- code
 - An user specified code snippet

The user can assume that in the provided code snippet the following variables will be defined:

The user provided code snippets have to consist of valid C++ code. The system can do

some preprocessing before wrapping the code into function calls and declare some variables to facilitate the rule definitions. The user can expect the following variables being predeclared:

- newObj
 - variable representing the target in-memory object, its type is that of the target object
- oldObj
 - in normal conversion rules, an object of TVirtualObject class representing the input data, guaranteed to hold the data members declared in the source property of the rule
- buffer
 - in raw conversion rules, an object of TBuffer class holding the data member declared in source property of the rule
- names of the data members of the target object declared in the target property of the rule declared to be the appropriate type
- onfile.xxx
 - in normal conversion rules, names of the variables of basic types declared in the source property of the rule

1.5.6.2 The C++ API

The schema evolution C++ API consists of two classes: `ROOT::TSchemaRuleSet` and `ROOT::TSchemaRule`. Objects of the `TSchemaRule` class represent the rules and their fields have exactly the same meaning as the ones of rules specified

in the dictionaries. `TSchemaRuleSet` objects manage the sets of rules and ensure their consistency. There can be no conflicting rules in the rule sets. The rule sets are owned by the `TClass` objects corresponding to the target classes defined in the rules and can be accessed using `TClass:: {Get|Adopt}SchemaRules`.

1.5.7 Manual Schema Evolution

If you have written your own `Streamer` as described in the section “Streamers with Special Additions”, you will have to manually add code for each version and manage the evolution of your class. When you add or remove data members, you must modify the `Streamer` by hand. ROOT assumes that you have increased the class version number in the `ClassDef` statement and introduced the relevant test in the read part of the `Streamer`. For example, if a new version of the `Event` class above includes a new member: `Int_t fNew` the `ClassDef` statement should be changed to `ClassDef(Event,2)` and the following lines should be added to the read part of the `Streamer`:

```
if (R__v > 1) R__b >> fNew;
else fNew = 0;           // set to some default value
```

If, in the same new version 2 you remove the member `fH`, you must add the following code to read the histogram object into some temporary object and delete it:

```
if (R__v) < 2 {
    TH1F *dummy = 0;
    R__b >> dummy;
    delete dummy;
}
```

Our experience with manual schema evolution shows that it is easy to make and mismatches between `Streamer` writers and readers are frequent and increase as the number of classes increase. We recommend you use `rootcling` generated `Streamers` whenever you can, and profit from the automatic schema evolution.

1.5.8 Building Class Definitions with the StreamerInfo

A ROOT file’s `StreamerInfo` list contains the description of all versions of all classes in the file. When a file is opened the `StreamerInfo`s are read into memory and it provides enough information to make the file browsable. The `TStreamerInfo` enables us to recreate a header file for the class in case the compiled class is not available. This is done with the `TFile::MakeProject` method. It creates a directory with the header files for the named classes and a `makefile` to compile a shared library with the class definitions.

1.5.9 Example: MakeProject

To explain the details, we use the example of the `ATLFast` project that is a fast simulation for the ATLAS experiment. The complete source for `ATLFast` can be downloaded at <ftp://root.cern.ch/root/atlfast.tar.gz>. Once we compile and run `ATLFast` we get a ROOT file called `atlfast.root`, containing the `ATLFast` objects. When we open the file, we get a warning that the file contains classes that are not in the dictionary. This is correct since we did not load the class definitions.

```
root[] TFile f("atlfast.root")
Warning in <TClass::TClass>: no dictionary for class TMCParticle is available
Warning in <TClass::TClass>: no dictionary for class ATLFMuon available
```

We can see the `StreamerInfo` for the classes:

```
root[] f.ShowStreamerInfo()
...
StreamerInfo for class: ATLFMuon, version=1
BASE TObject      offset= 0 type=66 Basic ROOT object
BASE TAtt3D       offset= 0 type= 0 3D attributes
Int_t m_KFcode    offset= 0 type= 3 Muon KF-code
Int_t m_MCParticle offset= 0 type= 3 Muon position in MCParticles list
Int_t m_KFmother  offset= 0 type= 3 Muon mother KF-code
Int_t m_UseFlag   offset= 0 type= 3 Muon energy usage flag
Int_t m_Isolated  offset= 0 type= 3 Muon isolation (1 for isolated)
Float_t m_Eta     offset= 0 type= 5 Eta coordinate
Float_t m_Phi     offset= 0 type= 5 Phi coordinate
```



```
Float_t m_PT      offset= 0 type= 5 Transverse energy
Int_t   m_Trigger offset= 0 type= 3 Result of trigger...
```

However, when we try to use a specific class we get a warning because the class is not in the dictionary. We can create a class using `gROOT->GetClass()` which makes a fake class from the `StreamerInfo`.

```
// Build a 'fake' class
root[] gROOT->GetClass("ATLFMuon")
(const class TClass*)0x87e5c08
// The fake class has a StreamerInfo
root[] gROOT->GetClass("ATLFMuon")->GetStreamerInfo()->ls()
StreamerInfo for class: ATLFMuon, version=1
BASE   TObject      offset= 0 type=66 Basic ROOT object
BASE   TAtt3D       offset= 0 type= 0 3D attributes
Int_t  m_KFcode     offset= 16 type= 3 Muon KF-code
Int_t  m_MCParticle offset= 20 type= 3 Muon position in MCParticles list
Int_t  m_KFmother   offset= 24 type= 3 Muon mother KF-code
Int_t  m_UseFlag    offset= 28 type= 3 Muon energy usage flag
Int_t  m_Isolated   offset= 32 type= 3 Muon isolation
Float_t m_Eta       offset= 36 type= 5 Eta coordinate
Float_t m_Phi       offset= 40 type= 5 Phi coordinate
Float_t m_PT        offset= 44 type= 5 Transverse energy
Int_t  m_Trigger    offset= 48 type= 3 Result of trigger
i= 0, TObject      type= 66, offset= 0, len=1, method=0
i= 1, TAtt3D       type= 0, offset= 0, len=1, method=142684688
i= 2, m_KFcode     type= 23, offset= 16, len=5, method=0
i= 3, m_Eta        type= 25, offset= 36, len=3, method=0
i= 4, m_Trigger    type= 3, offset= 48, len=1, method=0
```

`MakeProject` has three parameters:

```
MakeProject(const char *dirname, const char *classes, Option_t *option)
```

The first is the directory name in which to place the generated header files. The second parameter is the name of the classes to include in the project. By default, all classes are included. It recognizes the wild card character `*`, for example, `"ATLF*"` includes all classes beginning with `ATLF`. The third parameter is an option with the following values:

- `"new"` If the directory does not exist, it is created.
- `"recreate"` If the directory does not exist, it is created as in `"new"`, in addition if the directory does exist, all existing files are deleted before creating the new files.
- `"update"` The new classes are added to the existing directory and the existing classes are replaced with the new definition. If the directory does not exist, it creates it as in `"new"`.
- `"+"`: This option can be used in combination with the other three. It will create the necessary files to easily build a shared library containing the class definitions. Specifically it will:
 - Generate a script called `MAKE` that builds the shared library containing the definition of all classes in the directory.
 - Generate a `LinkDef.h` files to use with `rootcling` in `MAKE`.
 - Run `rootcling` to generate a `<dirname>ProjectDict.cxx` file.
 - Compile the `<dirname>ProjectDict.cxx` with the current options in `compiledata.h`.
 - Build a shared library `<dirname>.so`.
- `"++"`: This option can be used instead of the single `"+"`. It does everything the single `"+"` does, and dynamically loads the shared library `<dirname>.so`.

This example makes a directory called `MyProject` that will contain all class definitions from the `atlfast.root` file. The necessary `makefile` to build a shared library are also created, and since the `'++'` is appended, the shared library is also loaded.

```
root[] f.MakeProject("MyProject","*", "recreate++")
MakeProject has generated 0 classes in MyProject
MyProject/MAKE file has been generated
Shared lib MyProject/MyProject.so has been generated
Shared lib MyProject/MyProject.so has been dynamically linked
```


The contents of MyProject:

```
root[]      .! ls MyProject
ATLFCluster.h      ATLFJet.h          ATLFMiscMaker.h      ATLFTrack.h
TMCParticle.h      ATLFClusterMaker.h  ATLFJetMaker.h      ATLFMuon.h
ATLFElectron.h     ATLFMCMaker.h       ATLFMuonMaker.h     ATLFElectronMaker.h
ATLFMaker.h        ATLFPhoton.h        ATLFHistBrowser.h   ATLFMisc.h
ATLFPhotonMaker.h ATLFTrackMaker.h    ATLFTrigger.h       ATLFTriggerMaker.h
LinkDef.h          MAKE                MyProject.so         MyProjectProjectDict.h
MyProjectProjectDict.cxx      MyProjectProjectDict.o
```

Now you can load the shared library in any consecutive root session to use the `atlfast` classes.

```
root[] gSystem->Load("MyProject/MyProject")
root[] ATLFMuon muon
```

This is an example of a generated header file:

```
////////////////////////////////////
// This class has been generated by TFile::MakeProject
// (Thu Apr 5 10:18:37 2001 by ROOT version 3.00/06)
// from the TStreamerInfo in file atlfast.root
////////////////////////////////////
#ifdef ATLFMuon_h
#define ATLFMuon_h
#include "TObject.h"
#include "TAtt3D.h"
class ATLFMuon : public TObject , public TAtt3D {
public:
    Int_t      m_KFcode;           //Muon KF-code
    Int_t      m_MCParticle;      //Muon position in MCParticles list
    Int_t      m_KFmother;        //Muon mother KF-code
    Int_t      m_UseFlag;         //Muon energy usage flag
    Int_t      m_Isolated;        //Muon isolation (1 for isolated)
    Float_t    m_Eta;             //Eta coordinate
    Float_t    m_Phi;            //Phi coordinate
    Float_t    m_PT;             //Transverse energy
    Int_t      m_Trigger;         //Result of trigger
    ATLFMuon() {};}
    virtual ~ATLFMuon() {};}
    ClassDef(ATLFMuon,1) //
};
    ClassImp(ATLFMuon)
#endif
```

1.6 Compression and Performance

ROOT uses a compression algorithm based on the well-known `gzip` algorithm. It supports nine levels of compression. The default for ROOT is one. The compression level can be set with the method `TFile::SetCompressionLevel`. The experience with this algorithm shows that a compression level of 1.3 for raw data files and around two on most DST files is the optimum. The choice of one for the default is a compromise between the time it takes to read and write the object vs. the disk space savings.

To specify no compression, set the level to zero.

We recommend using compression when the time spent in I/O is small compared to the total processing time. If the I/O operation is increased by a factor of 5 it is still a small percentage of the total time and it may compress the data by a factor of 10. On the other hand if the time spend on I/O is large, compression may have a large impact on the program's performance.

The compression factor, i.e. the savings of disk space, varies with the type of data. A buffer with a same value array is compressed so that the value is only written once. For example, a track has the mass of a pion that it is always the same, and the charge of the pion that is either positive or negative. For 1000 pions, the mass will be written only once, and the charge only twice (positive and negative). When the data is sparse, i.e. when there are many zeros, the compression factor is also high.

Compression level	Bytes	Write Time (sec)	Read Time (sec.)
0	1,004,998	4.77	0.07
1	438,366	6.67	0.05
5	429,871	7.03	0.06
9	426,899	8.47	0.05

The time to uncompress an object is small compared to the compression time and is independent of the selected compression level. Note that the compression level may be changed at any time, but the new compression level will only apply to newly written objects. Consequently, a ROOT file may contain objects with different compression levels. This table shows four runs of the demo script that creates 15 histograms with different compression parameters. To make the numbers more significant, the macro was modified to create 1000 histograms. We have included two more examples to show the impact of compression on Trees in the next chapter.

1.6.1 Using the General Open Function of TFile

To make life simple we provide a general function to open any type of file (except shared memory files of class **TMapFile**). This functionality is provided by the static **TFile::Open()** function:

```
TFile *TFile::Open(const Text_t *name, Option_t *option="",
const Text_t *title="", Int_t compress, Int_t netopt)
```

Depending on the **name** argument, the function returns a **TFile** or one of its derivations, for example a **TXNetFile** or a **TDavixFile** object. In case a URL specifies a local file, a **TFile** object will be returned (and of course no login information is needed). The arguments of the **Open()** function are the same as the ones for the **TFile** constructor.

Using **ReOpen()** method it is possible to reopen a file with a different access mode, like from **READ** to **UPDATE** or from **NEW**, **CREATE**, **RECREATE**, **UPDATE** to **READ**. Thus the mode argument can be either “**READ**” or “**UPDATE**”. The method returns:

- 0 in case the mode was successfully modified;
- 1 in case the mode did not change (it was already as requested or there were wrong input arguments);
- -1 in case of failure. In the last case the file cannot be used anymore.

1.7 Remotely Access to ROOT Files

ROOT files can be accessed remotely in many ways, on the base of the protocol URL. Among the most popular are XRootD (protocols ‘**root://**’ and ‘**xrd://**’) and a Web server (protocol ‘**http://**’ or ‘**https://**’).

The **rootd** daemon is deprecated and has been removed in version 6.16/00.

Please refer to the XRootD documentation for starting and ensuring that such a daemon is running.

Reading and writing ROOT files over the net can be done by creating a **TFile** object using the static method **TFile::Open()** object. This will instantiate the appropriate derivation of **TFile** to handle the request. Inheriting from the **TFile** class, the returned instance will have exactly the same interface and behavior of **TFile**. The only difference is that it reads and writes from a remote service. In the example below the file is read via a web server through the **TDavixFile** plug-in.

1.7.1 A Simple Session

```
root[] TFile *f1 = TFile::Open("local/file.root","update")
root[] TFile *f2 = TFile::Open("root://my.server.org/data/file.root","new")
root[] TFile *f3 = TFile::Open("http://root.cern.ch/files/hsimple.root")
root[] f3.ls()
TDavixFile** http://root.cern.ch/files/hsimple.root
TDavixFile* http://root.cern.ch/files/hsimple.root
KEY: TH1F hpx;1 This is the px distribution
KEY: TH2F hpxpy;1 py vs px
KEY: TProfile hprof;1 Profile of pz versus px
KEY: TNtuple ntuple;1 Demo ntuple
root[] hpx.Draw()
```

1.8 XML Interface

A new module `xml` as implemented by Sergey Linev (GSI). It is an optional package that can be used to save a canvas into `file.xml` file format instead of `file.root`. XML files do not have any advantages compared to the normal ROOT files, except that the information in these files can be edited via a normal editor. The main motivation for this new format is to facilitate the communication with other non ROOT applications. Currently writing and reading XML files is limited to ROOT applications. It is our intention to develop a simple reader independent of the ROOT libraries that could be used as an example for real applications.

The XML format should be used only for small data volumes, typically histogram files, pictures, geometries, calibrations. The XML file is built in memory before being dumped to disk. Like for normal ROOT files, XML files use the same I/O mechanism exploiting the ROOT/Cling dictionary. Any class having a dictionary can be saved in XML format. This first implementation does not support subdirectories or trees.

The shared library `libRXML.so` may be loaded dynamically via `gSystem->Load("libRXML")`. This library is also automatically loaded by the plug-in manager as soon a XML file is created. To create an XTM file, simply specify a filename with an `.xml` extension when calling `TFile::Open`. `TFile::Open` will recognize that you are trying to open an XML file and return a `TXMLFile` object. When a XML file is open in write mode, one can use the normal `TObject::Write` to write an object in the file.

```
// example of a session saving a histogram to a XML file
TFile *f = TFile::Open("Example.xml","recreate");
TH1F *h = new TH1F("h","test",1000,-2,2)
h->FillRandom("gaus");
h->Write();
delete f;
// example of a session saving a histogram to a XML file
TFile *f = TFile::Open("Example.xml");
TH1F *h = (TH1F*)f->Get("h");
h->Draw();
```

The canvas can be saved as a XML file format via File menu / Save or Save As menu entries. One can do also:

```
canvas->Print("Example.xml");
```